



**INTERNATIONAL
GEMOLOGICAL
INSTITUTE**

ELECTRONIC COPY

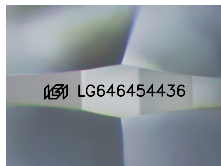
LG646454436



August 5, 2024
IGI Report Number **LG646454436**
ROUND BRILLIANT
LABORATORY GROWN DIAMOND
5.02 - 5.06 X 3.17 MM
Carat Weight **0.51 CARAT**
Color Grade **D**
Clarity Grade **VS 1**
Cut Grade **EXCELLENT**
Polish **EXCELLENT**
Symmetry **EXCELLENT**
Fluorescence **NONE**
Inscription(s) **IGI LG646454436**

LABORATORY GROWN DIAMOND REPORT

August 5, 2024
IGI Report Number **LG646454436**
Description **LABORATORY GROWN DIAMOND**
Shape and Cutting Style **ROUND BRILLIANT**
Measurements **5.02 - 5.06 X 3.17 MM**



Sample Image Used

GRADING RESULTS

Carat Weight **0.51 CARAT**
Color Grade **D**
Clarity Grade **VS 1**
Cut Grade **EXCELLENT**

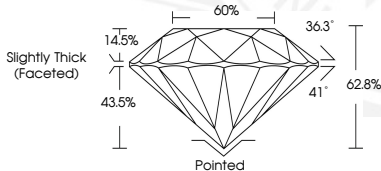
ADDITIONAL GRADING INFORMATION

Polish **EXCELLENT**
Symmetry **EXCELLENT**
Fluorescence **NONE**
Inscription(s) **IGI LG646454436**

Comments: This Laboratory Grown Diamond was created by Chemical Vapor Deposition (CVD) growth process. Type IIa



August 5, 2024
IGI Report Number **LG646454436**
ROUND BRILLIANT
LABORATORY GROWN DIAMOND
5.02 - 5.06 X 3.17 MM
Carat Weight **0.51 CARAT**
Color Grade **D**
Clarity Grade **VS 1**
Cut Grade **EXCELLENT**
Polish **EXCELLENT**
Symmetry **EXCELLENT**
Fluorescence **NONE**
Inscription(s) **IGI LG646454436**



THIS DOCUMENT WAS PRODUCED WITH THE FOLLOWING SECURITY MEASURES: SPECIAL DOCUMENT PAPER, INK SCREENS, WATERMARK, BACKGROUND DESIGNS, HOLOGRAM AND OTHER SECURITY FEATURES NOT LISTED AND DO EXCEED DOCUMENT SECURITY INDUSTRY GUIDELINES.

For terms & conditions and to verify this report, please visit www.igi.org