



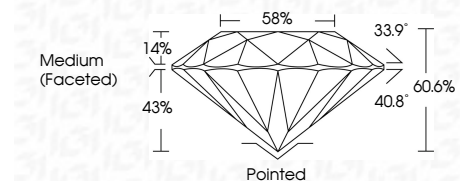
ELECTRONIC COPY

LG646455194
Report verification at igi.org



August 2, 2024
IGI Report Number LG646455194
Description LABORATORY GROWN DIAMOND
Shape and Cutting Style ROUND BRILLIANT
Measurements 9.13 - 9.09 X 5.51 MM

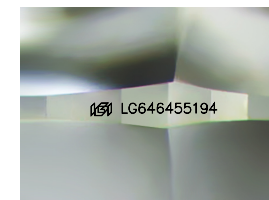
GRADING RESULTS
Carat Weight 2.79 CARATS
Color Grade G
Clarity Grade VS 1
Cut Grade IDEAL



ADDITIONAL GRADING INFORMATION
Polish EXCELLENT
Symmetry EXCELLENT
Fluorescence NONE
Inscription(s) IGI LG646455194
Comments: This Laboratory Grown Diamond was created by Chemical Vapor Deposition (CVD) growth process. Type IIa

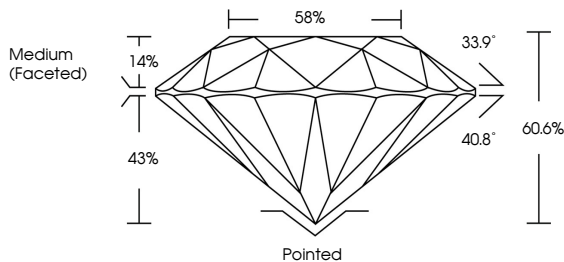


August 2, 2024
IGI Report No LG646455194
ROUND BRILLIANT
9.13 - 9.09 X 5.51 MM
2.79 CARATS
Color Grade G
Clarity Grade VS 1
Cut Grade IDEAL
Depth 60.6%
Table 58%
Medium (Faceted)
Culet Pointed
Polish EXCELLENT
Symmetry EXCELLENT
Fluorescence NONE
Inscription(s) IGI LG646455194
Comments: This Laboratory Grown Diamond was created by Chemical Vapor Deposition (CVD) growth process. Type IIa

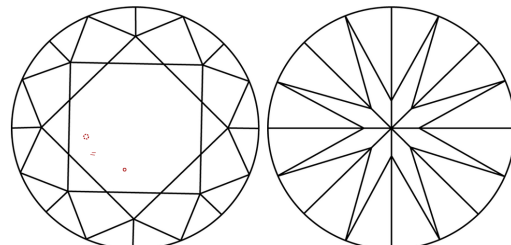


Sample Image Used

PROPORTIONS



CLARITY CHARACTERISTICS



KEY TO SYMBOLS
Red symbols indicate internal characteristics.
Green symbols indicate external characteristics.

Table with 10 columns for color grades: D, E, F, G, H, I, J, Faint, Very Light, Light.

Table with 5 columns for clarity grades: IF, VS 1-2, VS 1-2, SI 1-2, I 1-3. Includes descriptions like Internally Flawless, Very Very Slightly Included, etc.

