



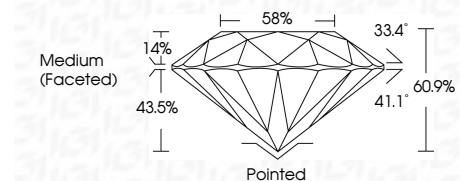
ELECTRONIC COPY

LG646455987
Report verification at igi.org



August 3, 2024
IGI Report Number LG646455987
Description LABORATORY GROWN DIAMOND
Shape and Cutting Style ROUND BRILLIANT
Measurements 7.15 - 7.18 X 4.36 MM

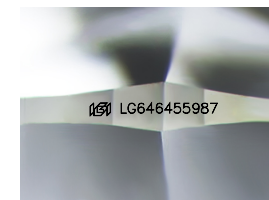
GRADING RESULTS
Carat Weight 1.37 CARAT
Color Grade G
Clarity Grade VS 1
Cut Grade IDEAL



ADDITIONAL GRADING INFORMATION
Polish EXCELLENT
Symmetry EXCELLENT
Fluorescence NONE
Inscription(s) IGI LG646455987
Comments: This Laboratory Grown Diamond was created by Chemical Vapor Deposition (CVD) growth process. Type IIa

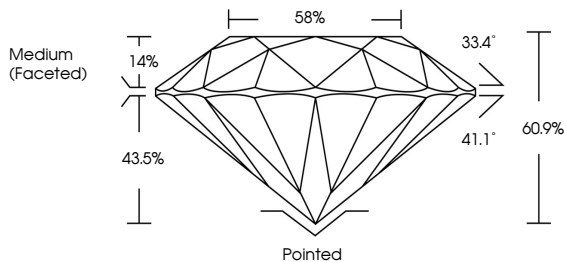


August 3, 2024
IGI Report No LG646455987
ROUND BRILLIANT
7.15 - 7.18 X 4.36 MM
1.37 CARAT
Color Grade G
Clarity Grade VS 1
Depth 60.9%
Table 58%
Medium (Faceted)
Cutler Pointed
Polish EXCELLENT
Symmetry EXCELLENT
Fluorescence NONE
Inscription(s) IGI LG646455987
Comments: This Laboratory Grown Diamond was created by Chemical Vapor Deposition (CVD) growth process. Type IIa

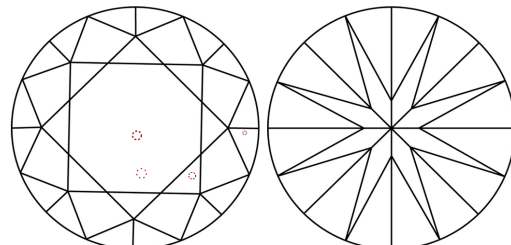


Sample Image Used

PROPORTIONS



CLARITY CHARACTERISTICS



KEY TO SYMBOLS
Red symbols indicate internal characteristics.
Green symbols indicate external characteristics.

Table with 5 columns: D, E, F, G, H, I, J, Faint, Very Light, Light

Table with 5 columns: IF, VS 1-2, VS 1-2, SI 1-2, I 1-3, Internally Flawless, Very Very Slightly Included, Very Slightly Included, Slightly Included, Included



August 3, 2024
IGI Report Number LG646455987
Description LABORATORY GROWN DIAMOND
Shape and Cutting Style ROUND BRILLIANT
Measurements 7.15 - 7.18 X 4.36 MM

GRADING RESULTS
Carat Weight 1.37 CARAT
Color Grade G
Clarity Grade VS 1
Cut Grade IDEAL

ADDITIONAL GRADING INFORMATION
Polish EXCELLENT
Symmetry EXCELLENT
Fluorescence NONE
Inscription(s) IGI LG646455987

Comments: This Laboratory Grown Diamond was created by Chemical Vapor Deposition (CVD) growth process. Type IIa