



ELECTRONIC COPY

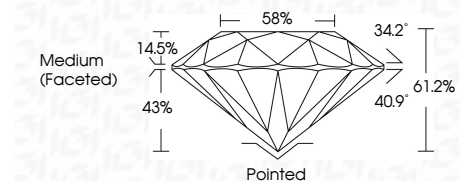
LG646459346
Report verification at igi.org



August 3, 2024
IGI Report Number LG646459346
Description LABORATORY GROWN DIAMOND
Shape and Cutting Style ROUND BRILLIANT
Measurements 7.79 - 7.85 X 4.78 MM

GRADING RESULTS

Carat Weight 1.80 CARAT
Color Grade F
Clarity Grade VS 1
Cut Grade IDEAL

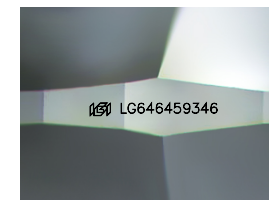


ADDITIONAL GRADING INFORMATION

Polish EXCELLENT
Symmetry EXCELLENT
Fluorescence NONE
Inscription(s) IGI LG646459346
Comments: This Laboratory Grown Diamond was created by Chemical Vapor Deposition (CVD) growth process. Type IIa

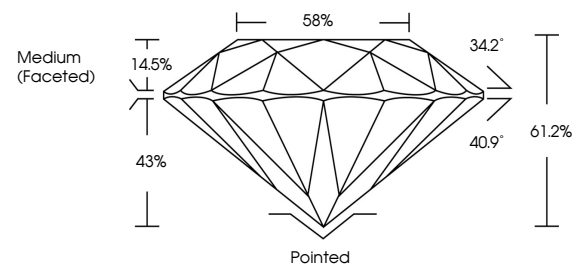


August 3, 2024
IGI Report No LG646459346
ROUND BRILLIANT
1.80 CARAT F
7.79 - 7.85 X 4.78 MM
Color Grade VS 1
Clarity Grade IDEAL
Depth 61.2%
Table 58%
Girdle Medium (Faceted)
Culet Pointed
Polish EXCELLENT
Symmetry EXCELLENT
Fluorescence NONE
Inscriptions(s) IGI LG646459346
Comments: This Laboratory Grown Diamond was created by Chemical Vapor Deposition (CVD) growth process. Type IIa

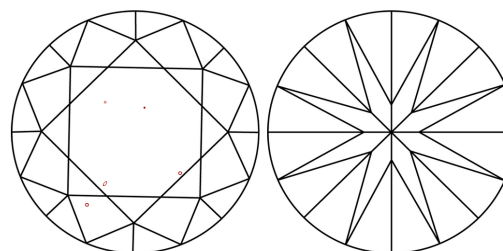


Sample Image Used

PROPORTIONS



CLARITY CHARACTERISTICS



KEY TO SYMBOLS

Red symbols indicate internal characteristics.
Green symbols indicate external characteristics.

COLOR

D E F G H I J Faint Very Light Light

CLARITY

IF VS 1-2 VS 1-2 SI 1-2 I 1-3
Internally Flawless Very Very Slightly Included Very Slightly Included Slightly Included Included

