



ELECTRONIC COPY

LG646472990 Report verification at igi.org

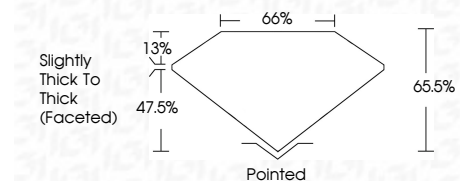


August 7, 2024 IGI Report Number LG646472990 Description LABORATORY GROWN DIAMOND Shape and Cutting Style CUT CORNERED RECTANGULAR MODIFIED BRILLIANT

Measurements 10.30 X 7.15 X 4.68 MM

GRADING RESULTS

Carat Weight 3.08 CARATS Color Grade H Clarity Grade VVS 1



ADDITIONAL GRADING INFORMATION

Polish EXCELLENT Symmetry EXCELLENT Fluorescence NONE Inscription(s) LG646472990 Comments: This Laboratory Grown Diamond was created by Chemical Vapor Deposition (CVD) growth process. Type IIa



August 7, 2024 IGI Report No LG646472990 CUT CORNERED RECT. MODIFIED BRILLIANT 10.30 X 7.15 X 4.68 MM 3.08 CARATS H VVS 1 65.5% 65% Slightly Thick To Thick (Faceted) Pointed EXCELLENT EXCELLENT NONE LG646472990

Comments: This Laboratory Grown Diamond was created by Chemical Vapor Deposition (CVD) growth process. Type IIa

LABORATORY GROWN DIAMOND REPORT

August 7, 2024 IGI Report Number LG646472990 Description LABORATORY GROWN DIAMOND Shape and Cutting Style CUT CORNERED RECTANGULAR MODIFIED BRILLIANT Measurements 10.30 X 7.15 X 4.68 MM

GRADING RESULTS

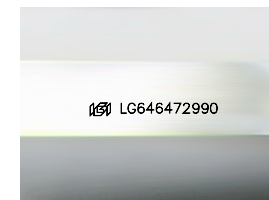
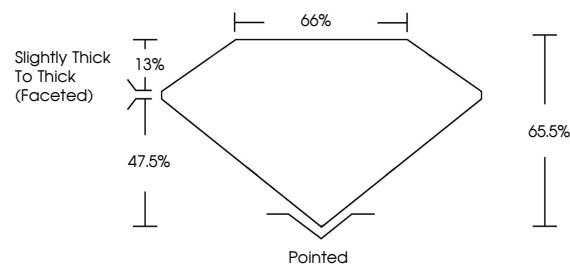
Carat Weight 3.08 CARATS Color Grade H Clarity Grade VVS 1

ADDITIONAL GRADING INFORMATION

Polish EXCELLENT Symmetry EXCELLENT Fluorescence NONE Inscription(s) LG646472990

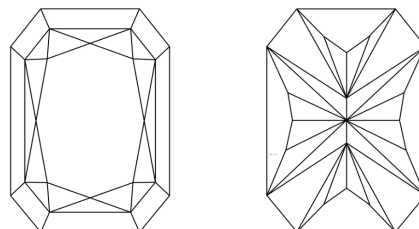
Comments: This Laboratory Grown Diamond was created by Chemical Vapor Deposition (CVD) growth process. Type IIa

PROPORTIONS



Sample Image Used

CLARITY CHARACTERISTICS



KEY TO SYMBOLS

Red symbols indicate internal characteristics. Green symbols indicate external characteristics.

COLOR

D E F G H I J Faint Very Light Light

CLARITY

Table with columns for clarity grades: IF, VS 1-2, VS 1-2, SI 1-2, I 1-3 and their descriptions: Internally Flawless, Very Very Slightly Included, Very Slightly Included, Slightly Included, Included