



ELECTRONIC COPY

LG646473180
Report verification at igi.org



August 11, 2024
IGI Report Number LG646473180
Description LABORATORY GROWN DIAMOND
Shape and Cutting Style CUT CORNERED RECTANGULAR MODIFIED BRILLIANT
Measurements 7.78 X 5.35 X 3.55 MM
GRADING RESULTS
Carat Weight 1.29 CARAT
Color Grade FANCY INTENSE YELLOW
Clarity Grade VVS 2

LABORATORY GROWN DIAMOND REPORT

August 11, 2024
IGI Report Number LG646473180
Description LABORATORY GROWN DIAMOND
Shape and Cutting Style CUT CORNERED RECTANGULAR MODIFIED BRILLIANT
Measurements 7.78 X 5.35 X 3.55 MM

GRADING RESULTS

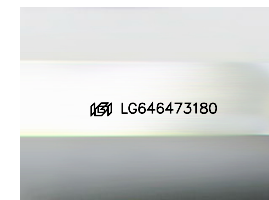
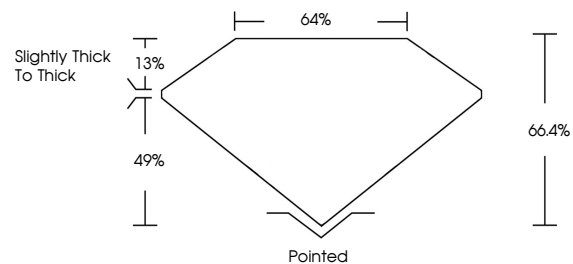
Carat Weight 1.29 CARAT
Color Grade FANCY INTENSE YELLOW
Clarity Grade VVS 2

ADDITIONAL GRADING INFORMATION

Polish EXCELLENT
Symmetry EXCELLENT
Fluorescence NONE
Inscription(s) LG646473180

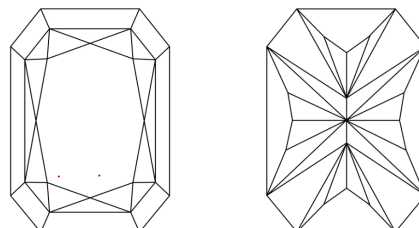
Comments: This Laboratory Grown Diamond was created by Chemical Vapor Deposition (CVD) growth process.

PROPORTIONS



Sample Image Used

CLARITY CHARACTERISTICS



KEY TO SYMBOLS

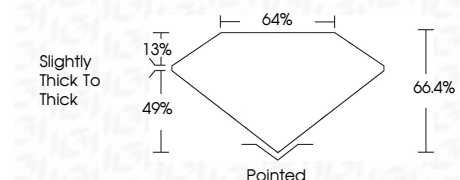
Red symbols indicate internal characteristics.
Green symbols indicate external characteristics.

COLOR

D E F G H I J Faint Very Light Light

CLARITY

Table with columns for clarity grades: IF, VVS 1-2, VS 1-2, SI 1-2, I 1-3 and their corresponding descriptions: Internally Flawless, Very Very Slightly Included, Very Slightly Included, Slightly Included, Included.



ADDITIONAL GRADING INFORMATION

Polish EXCELLENT
Symmetry EXCELLENT
Fluorescence NONE
Inscription(s) LG646473180
Comments: This Laboratory Grown Diamond was created by Chemical Vapor Deposition (CVD) growth process.



August 11, 2024
IGI Report No LG646473180
CUT CORNERED RECT. MODIFIED BRILLIANT
7.78 X 5.35 X 3.55 MM
1.29 CARAT
FANCY INTENSE YELLOW
VVS 2
66.4%
49%
Slightly Thick To Thick
Pointed
EXCELLENT
EXCELLENT
NONE
Inscription(s) LG646473180
Comments: This Laboratory Grown Diamond was created by Chemical Vapor Deposition (CVD) growth process.