



ELECTRONIC COPY

LG646473253
Report verification at igi.org



August 16, 2024
IGI Report Number **LG646473253**
Description **LABORATORY GROWN DIAMOND**
Shape and Cutting Style **CUT CORNERED
RECTANGULAR MODIFIED
BRILLIANT**
Measurements **14.30 X 10.17 X 6.70 MM**
GRADING RESULTS
Carat Weight **9.20 CARATS**
Color Grade **FANCY INTENSE GREYISH
YELLOW**
Clarity Grade **VS 1**

LABORATORY GROWN DIAMOND REPORT

August 16, 2024
IGI Report Number **LG646473253**
Description **LABORATORY GROWN DIAMOND**
Shape and Cutting Style **CUT CORNERED RECTANGULAR
MODIFIED BRILLIANT**
Measurements **14.30 X 10.17 X 6.70 MM**

GRADING RESULTS

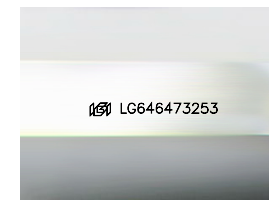
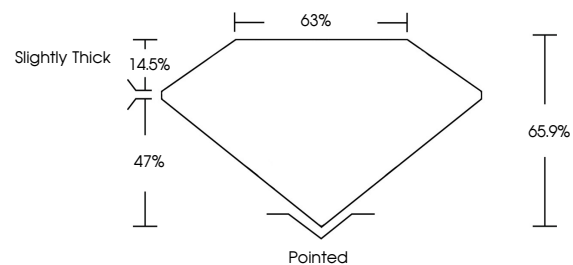
Carat Weight **9.20 CARATS**
Color Grade **FANCY INTENSE GREYISH
YELLOW**
Clarity Grade **VS 1**

ADDITIONAL GRADING INFORMATION

Polish **EXCELLENT**
Symmetry **EXCELLENT**
Fluorescence **NONE**
Inscription(s) **IGI LG646473253**

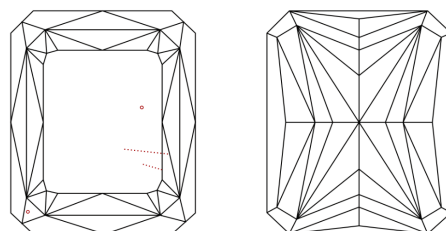
Comments: This Laboratory Grown Diamond was created by Chemical Vapor Deposition (CVD) growth process.

PROPORTIONS



Sample Image Used

CLARITY CHARACTERISTICS



KEY TO SYMBOLS

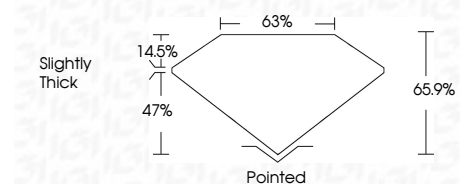
Red symbols indicate internal characteristics.
Green symbols indicate external characteristics.

COLOR

D E F G H I J Faint Very Light Light

CLARITY

IF	VS ¹⁻²	VS ¹⁻²	SI ¹⁻²	I ¹⁻³
Internally Flawless	Very Very Slightly Included	Very Slightly Included	Slightly Included	Included



ADDITIONAL GRADING INFORMATION

Polish **EXCELLENT**
Symmetry **EXCELLENT**
Fluorescence **NONE**
Inscription(s) **IGI LG646473253**
Comments: This Laboratory Grown Diamond was created by Chemical Vapor Deposition (CVD) growth process.



IGI



August 16, 2024
IGI Report No **LG646473253**
CUT CORNERED RECT. MODIFIED BRILLIANT
14.30 X 10.17 X 6.70 MM
Carat Weight **9.20 CARATS**
Color Grade **FANCY INTENSE GREYISH YELLOW**
Clarity Grade **VS 1**
Depth **65.9%**
Table **63%**
Girdle **Slightly Thick**
Culet **Pointed**
Polish **EXCELLENT**
Symmetry **EXCELLENT**
Fluorescence **NONE**
Inscription(s) **IGI LG646473253**
Comments: This Laboratory Grown Diamond was created by Chemical Vapor Deposition (CVD) growth process.