



**ELECTRONIC COPY**

LG646474602  
Report verification at igi.org

**LABORATORY GROWN DIAMOND REPORT**

August 7, 2024  
IGI Report Number **LG646474602**  
Description **LABORATORY GROWN DIAMOND**  
Shape and Cutting Style **ROUND BRILLIANT**  
Measurements **7.78 - 7.84 X 4.65 MM**

**GRADING RESULTS**

Carat Weight **1.76 CARAT**  
Color Grade **F**  
Clarity Grade **VS 1**  
Cut Grade **EXCELLENT**

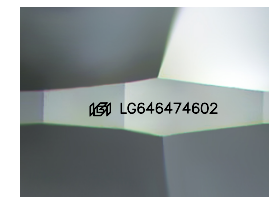
**ADDITIONAL GRADING INFORMATION**

Polish **VERY GOOD**  
Symmetry **EXCELLENT**  
Fluorescence **NONE**  
Inscription(s) **LG646474602**

Comments: This Laboratory Grown Diamond was

**PROPORTIONS**

62%  
32.9°  
Medium (Faceted) 12.5%  
43% 40.9° 59.5%  
Pointed



Sample Image Used

**CLARITY CHARACTERISTICS**

**KEY TO SYMBOLS**

Red symbols indicate internal characteristics.  
Green symbols indicate external characteristics.

**COLOR**

D E F G H I J Faint Very Light Light

**CLARITY**

IF VS<sup>1-2</sup> VS<sup>1-2</sup> SI<sup>1-2</sup> I<sup>1-3</sup>  
Internally Flawless Very Very Slightly Included Very Slightly Included Slightly Included Included



August 7, 2024  
IGI Report Number **LG646474602**  
Description **LABORATORY GROWN DIAMOND**  
Shape and Cutting Style **ROUND BRILLIANT**  
Measurements **7.78 - 7.84 X 4.65 MM**  
**GRADING RESULTS**  
Carat Weight **1.76 CARAT**  
Color Grade **F**  
Clarity Grade **VS 1**  
Cut Grade **EXCELLENT**

62%  
32.9°  
Medium (Faceted) 12.5%  
43% 40.9° 59.5%

Symmetry	EXCELLENT
Fluorescence	NONE
Inscription(s)	LG646474602

Comments: This Laboratory Grown Diamond was created by Chemical Vapor Deposition (CVD) growth process.  
Type IIa



August 7, 2024  
IGI Report No **LG646474602**  
**ROUND BRILLIANT**  
7.78 - 7.84 X 4.65 MM  
1.76 CARAT  
F  
VS 1  
EXCELLENT  
62%  
Medium (Faceted)  
Pointed  
VERY GOOD  
EXCELLENT  
NONE  
NONE  
IGI LG646474602  
Comments: This Laboratory Grown Diamond was created by Chemical Vapor Deposition (CVD) growth process.  
Type IIa

