



ELECTRONIC COPY

LG646476401
Report verification at igi.org



August 6, 2024

IGI Report Number LG646476401

Description LABORATORY GROWN DIAMOND

Shape and Cutting Style CUSHION BRILLIANT

Measurements 7.56 X 6.07 X 4.18 MM

GRADING RESULTS

Carat Weight 1.57 CARAT

Color Grade D

Clarity Grade VVS 2

August 6, 2024

IGI Report Number LG646476401

Description LABORATORY GROWN DIAMOND

Shape and Cutting Style CUSHION BRILLIANT

Measurements 7.56 X 6.07 X 4.18 MM

GRADING RESULTS

Carat Weight 1.57 CARAT

Color Grade D

Clarity Grade VVS 2

ADDITIONAL GRADING INFORMATION

Polish EXCELLENT

Symmetry EXCELLENT

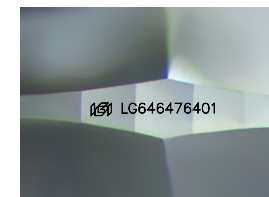
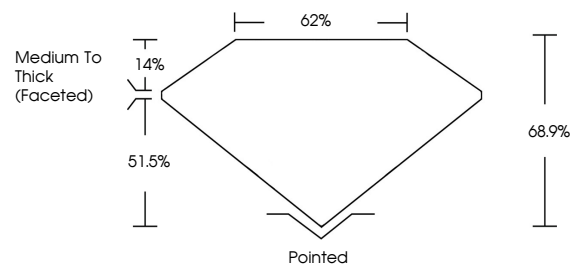
Fluorescence NONE

Inscription(s) LG646476401

Comments: As Grown - No indication of post-growth treatment.

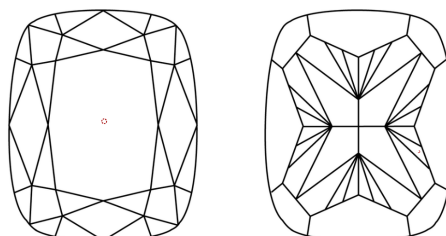
This Laboratory Grown Diamond was created by High Pressure High Temperature (HPHT) growth process. Type II

PROPORTIONS



Sample Image Used

CLARITY CHARACTERISTICS



KEY TO SYMBOLS

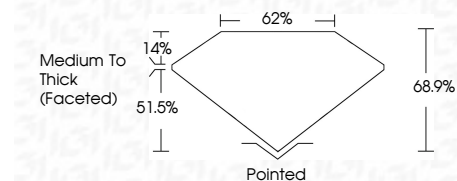
Red symbols indicate internal characteristics. Green symbols indicate external characteristics.

COLOR

D E F G H I J Faint Very Light Light

CLARITY

IF VVS 1-2 VS 1-2 SI 1-2 I 1-3 Internally Flawless Very Very Slightly Included Very Slightly Included Slightly Included Included



ADDITIONAL GRADING INFORMATION

Polish EXCELLENT

Symmetry EXCELLENT

Fluorescence NONE

Inscription(s) LG646476401

Comments: As Grown - No indication of post-growth treatment.

This Laboratory Grown Diamond was created by High Pressure High Temperature (HPHT) growth process. Type II



Table with 10 columns: August 6, 2024, IGI Report No LG646476401, CUSHION BRILLIANT, 7.56 X 6.07 X 4.18 MM, 1.57 CARAT, D, VVS 2, 68.9%, 62%, Medium To Thick (Faceted), Pointed, EXCELLENT, EXCELLENT, NONE, LG646476401. Includes comments on post-growth treatment and HPHT growth process.