



ELECTRONIC COPY

LG646476987
Report verification at igi.org

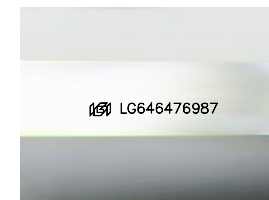
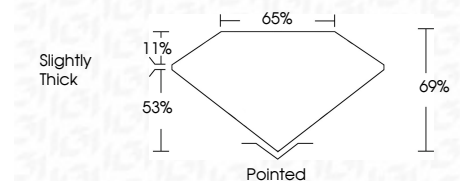


August 6, 2024
IGI Report Number LG646476987
Description LABORATORY GROWN DIAMOND
Shape and Cutting Style CUT CORNERED RECTANGULAR MODIFIED BRILLIANT

Measurements 7.93 X 5.88 X 4.06 MM

GRADING RESULTS

Carat Weight 1.58 CARAT
Color Grade F
Clarity Grade VS 1



Sample Image Used

ADDITIONAL GRADING INFORMATION

Polish EXCELLENT
Symmetry EXCELLENT
Fluorescence NONE

Inscription(s) LG646476987

Comments: This Laboratory Grown Diamond was created by Chemical Vapor Deposition (CVD) growth process. Type IIa



August 6, 2024
IGI Report No LG646476987
CUT CORNERED RECT. MODIFIED BRILLIANT
7.93 X 5.88 X 4.06 MM
1.58 CARAT F
VS 1 69% 65%
Slightly Thick
Pointed
EXCELLENT EXCELLENT
NONE
Inscription(s) LG646476987
Comments: This Laboratory Grown Diamond was created by Chemical Vapor Deposition (CVD) growth process. Type IIa

August 6, 2024
IGI Report Number LG646476987
Description LABORATORY GROWN DIAMOND
Shape and Cutting Style CUT CORNERED RECTANGULAR MODIFIED BRILLIANT
Measurements 7.93 X 5.88 X 4.06 MM

GRADING RESULTS

Carat Weight 1.58 CARAT
Color Grade F
Clarity Grade VS 1

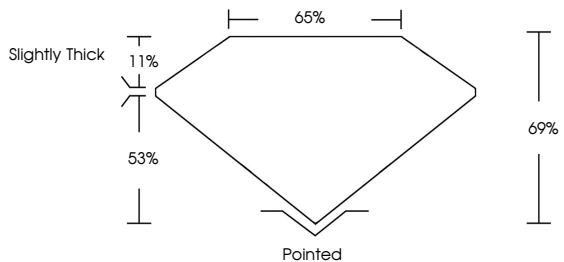
ADDITIONAL GRADING INFORMATION

Polish EXCELLENT
Symmetry EXCELLENT
Fluorescence NONE

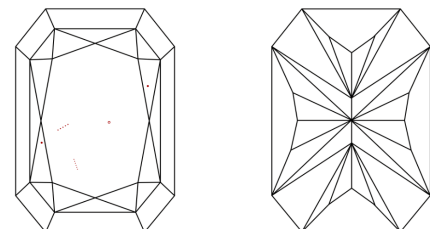
Inscription(s) LG646476987

Comments: This Laboratory Grown Diamond was created by Chemical Vapor Deposition (CVD) growth process. Type IIa

PROPORTIONS



CLARITY CHARACTERISTICS



KEY TO SYMBOLS

Red symbols indicate internal characteristics.
Green symbols indicate external characteristics.

COLOR

D E F G H I J Faint Very Light Light

CLARITY

IF VS 1-2 VS 1-2 SI 1-2 I 1-3
Internally Flawless Very Very Slightly Included Very Slightly Included Slightly Included Included