



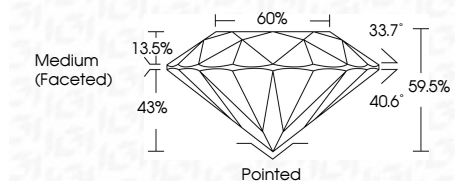
ELECTRONIC COPY

LG646482355 Report verification at igi.org



August 5, 2024 IGI Report Number LG646482355 Description LABORATORY GROWN DIAMOND Shape and Cutting Style ROUND BRILLIANT Measurements 7.38 - 7.38 X 4.39 MM

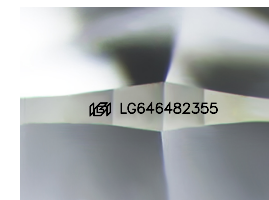
GRADING RESULTS Carat Weight 1.47 CARAT Color Grade E Clarity Grade VS 1 Cut Grade IDEAL



ADDITIONAL GRADING INFORMATION Polish EXCELLENT Symmetry EXCELLENT Fluorescence NONE Inscription(s) IGI LG646482355 Comments: This Laboratory Grown Diamond was created by Chemical Vapor Deposition (CVD) growth process. Type IIa

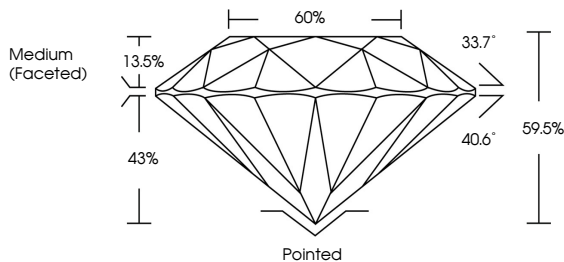


August 5, 2024 IGI Report No LG646482355 ROUND BRILLIANT 7.38 - 7.38 X 4.39 MM 1.47 CARAT E VS 1 IDEAL 59.5% 60% Medium (Faceted) Pointed EXCELLENT EXCELLENT NONE NONE IGI LG646482355 Comments: This Laboratory Grown Diamond was created by Chemical Vapor Deposition (CVD) growth process. Type IIa

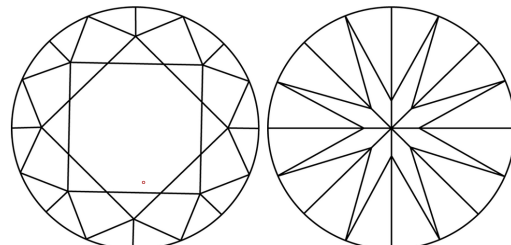


Sample Image Used

PROPORTIONS



CLARITY CHARACTERISTICS



KEY TO SYMBOLS Red symbols indicate internal characteristics. Green symbols indicate external characteristics.

COLOR scale from D to J, with Faint, Very Light, and Light categories.

CLARITY scale from IF to I 1-3, with Internally Flawless, Very Very Slightly Included, Very Slightly Included, Slightly Included, and Included categories.



August 5, 2024 IGI Report Number LG646482355 Description LABORATORY GROWN DIAMOND Shape and Cutting Style ROUND BRILLIANT Measurements 7.38 - 7.38 X 4.39 MM

GRADING RESULTS Carat Weight 1.47 CARAT Color Grade E Clarity Grade VS 1 Cut Grade IDEAL

ADDITIONAL GRADING INFORMATION Polish EXCELLENT Symmetry EXCELLENT Fluorescence NONE Inscription(s) IGI LG646482355

Comments: This Laboratory Grown Diamond was created by Chemical Vapor Deposition (CVD) growth process. Type IIa