



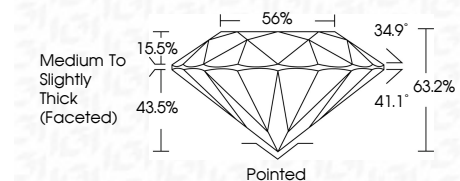
ELECTRONIC COPY

LG646482749 Report verification at igi.org



August 6, 2024 IGI Report Number LG646482749 Description LABORATORY GROWN DIAMOND Shape and Cutting Style ROUND BRILLIANT Measurements 8.07 - 8.11 X 5.11 MM

GRADING RESULTS Carat Weight 2.07 CARATS Color Grade E Clarity Grade VS 1 Cut Grade EXCELLENT



ADDITIONAL GRADING INFORMATION Polish EXCELLENT Symmetry EXCELLENT Fluorescence NONE Inscription(s) LG646482749 Comments: This Laboratory Grown Diamond was created by Chemical Vapor Deposition (CVD) growth process. Type IIa



August 6, 2024 IGI Report No LG646482749 ROUND BRILLIANT 8.07 - 8.11 X 5.11 MM 2.07 CARATS E Color Grade VS 1 EXCELLENT 63.2% 56% Medium To Slightly Thick (Faceted) Pointed EXCELLENT EXCELLENT NONE NONE LG646482749

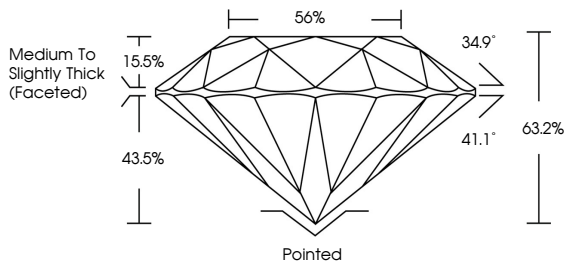
August 6, 2024 IGI Report Number LG646482749 Description LABORATORY GROWN DIAMOND Shape and Cutting Style ROUND BRILLIANT Measurements 8.07 - 8.11 X 5.11 MM

GRADING RESULTS Carat Weight 2.07 CARATS Color Grade E Clarity Grade VS 1 Cut Grade EXCELLENT

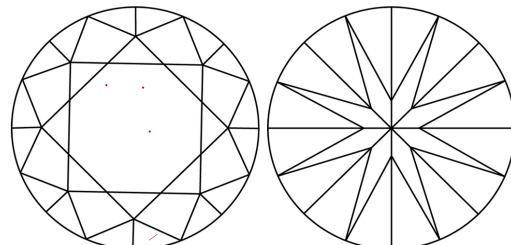
ADDITIONAL GRADING INFORMATION Polish EXCELLENT Symmetry EXCELLENT Fluorescence NONE Inscription(s) LG646482749

Comments: This Laboratory Grown Diamond was created by Chemical Vapor Deposition (CVD) growth process. Type IIa

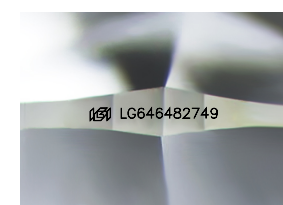
PROPORTIONS



CLARITY CHARACTERISTICS



KEY TO SYMBOLS Red symbols indicate internal characteristics. Green symbols indicate external characteristics.



Sample Image Used

COLOR scale: D, E, F, G, H, I, J, Faint, Very Light, Light

CLARITY scale: IF, VS 1-2, VS 1-2, SI 1-2, I 1-3, Internally Flawless, Very Very Slightly Included, Very Slightly Included, Slightly Included, Included

