

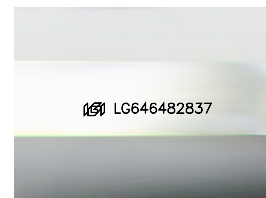
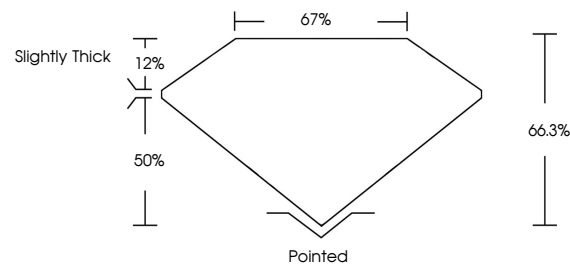


ELECTRONIC COPY

LABORATORY GROWN DIAMOND REPORT

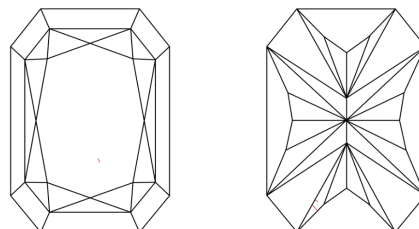
LG646482837
Report verification at igi.org

PROPORTIONS



Sample Image Used

CLARITY CHARACTERISTICS



KEY TO SYMBOLS

Red symbols indicate internal characteristics.
Green symbols indicate external characteristics.

COLOR

D E F G H I J Faint Very Light Light

CLARITY

IF	VVS ¹⁻²	VS ¹⁻²	SI ¹⁻²	I ¹⁻³
Internally Flawless	Very Very Slightly Included	Very Slightly Included	Slightly Included	Included



© IGI 2020, International Gemological Institute

FD - 10 20

www.igi.org

LABORATORY GROWN DIAMOND REPORT



August 7, 2024

IGI Report Number **LG646482837**Description **LABORATORY GROWN DIAMOND**

Shape and Cutting Style

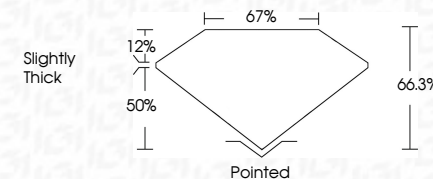
Measurements **9.04 X 6.21 X 4.12 MM**

GRADING RESULTS

Carat Weight **2.03 CARATS**

Color Grade

Clarity Grade VS 1



ADDITIONAL GRADING INFORMATION

Polish **EXCELLENT**Symmetry **EXCELLENT**Fluorescence **NONE**Inscription(s)  LG646482837

Comments: This Laboratory Grown Diamond was created by Chemical Vapor Deposition (CVD) growth process.
Type IIa



IG

August 7, 2024	GI REPORTED RECT. MODIFIED BRILLIANT
0.04 X 0.21 X 4.12 MM	2.03 CARATS
Color Grade	Vs 1
Clarity Grade	64.5%
Depth	57%
Table	Slightly Thick
Girdle	
Culet	Pointed
Polish	EXCELLENT
Symmetry	EXCELLENT
Fluorescence	NONE
Inscription(s)	IGI LG54462837
Comments:	
The Laboratory Grown Diamond was grown using the Chemical Vapor Deposition (CVD) growth process.	
Type IIG	