



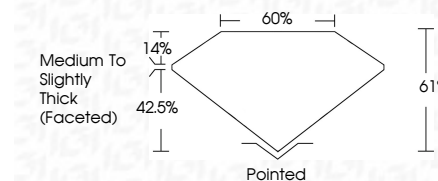
ELECTRONIC COPY

LG646486782
Report verification at igi.org



August 6, 2024
IGI Report Number **LG646486782**
Description **LABORATORY GROWN DIAMOND**
Shape and Cutting Style **OVAL BRILLIANT**
Measurements **9.86 X 7.30 X 4.45 MM**

GRADING RESULTS
Carat Weight **2.02 CARATS**
Color Grade **D**
Clarity Grade **VS 1**



ADDITIONAL GRADING INFORMATION
Polish **EXCELLENT**
Symmetry **EXCELLENT**
Fluorescence **NONE**
Inscription(s) **IGI LG646486782**
Comments: This Laboratory Grown Diamond was created by Chemical Vapor Deposition (CVD) growth process. Type IIa



August 6, 2024
IGI Report No LG646486782
OVAL BRILLIANT
9.86 X 7.30 X 4.45 MM
Carat Weight **2.02 CARATS**
Color Grade **D**
Clarity Grade **VS 1**
Depth **61%**
Table **60%**
Girdle **Medium to Slightly Thick (Faceted)**
Culet **Pointed**
Polish **EXCELLENT**
Symmetry **EXCELLENT**
Fluorescence **NONE**
Inscription(s) **IGI LG646486782**
Comments: This Laboratory Grown Diamond was created by Chemical Vapor Deposition (CVD) growth process. Type IIa

LABORATORY GROWN DIAMOND REPORT

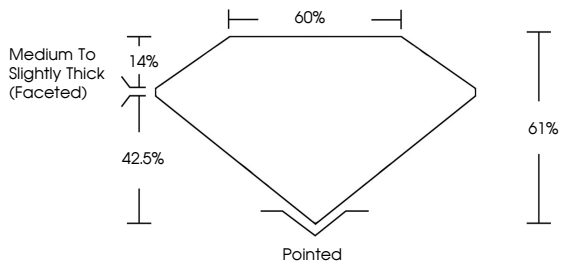
August 6, 2024
IGI Report Number **LG646486782**
Description **LABORATORY GROWN DIAMOND**
Shape and Cutting Style **OVAL BRILLIANT**
Measurements **9.86 X 7.30 X 4.45 MM**

GRADING RESULTS
Carat Weight **2.02 CARATS**
Color Grade **D**
Clarity Grade **VS 1**

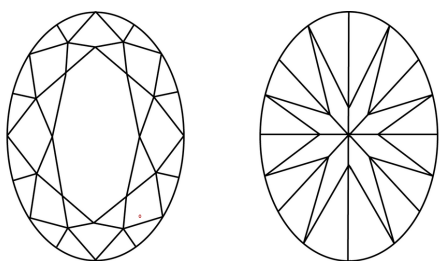
ADDITIONAL GRADING INFORMATION
Polish **EXCELLENT**
Symmetry **EXCELLENT**
Fluorescence **NONE**
Inscription(s) **IGI LG646486782**

Comments: This Laboratory Grown Diamond was created by Chemical Vapor Deposition (CVD) growth process. Type IIa

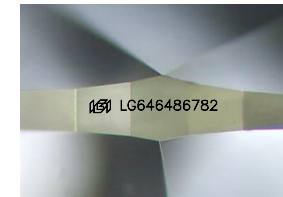
PROPORTIONS



CLARITY CHARACTERISTICS



KEY TO SYMBOLS
Red symbols indicate internal characteristics.
Green symbols indicate external characteristics.



Sample Image Used

COLOR

D	E	F	G	H	I	J	Faint	Very Light	Light
---	---	---	---	---	---	---	-------	------------	-------

CLARITY

IF	VS ¹⁻²	VS ¹⁻²	SI ¹⁻²	I ¹⁻³
Internally Flawless	Very Very Slightly Included	Very Slightly Included	Slightly Included	Included

