



ELECTRONIC COPY

LG646487125
Report verification at igi.org



August 10, 2024

IGI Report Number **LG646487125**

Description **LABORATORY GROWN DIAMOND**

Shape and Cutting Style **PRINCESS CUT**

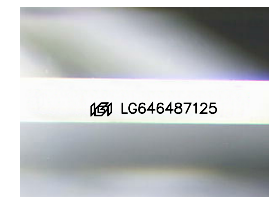
Measurements **6.19 X 6.12 X 4.48 MM**

GRADING RESULTS

Carat Weight **1.52 CARAT**

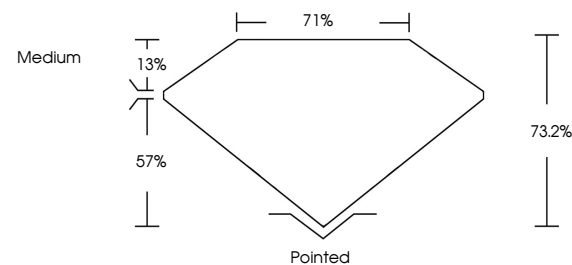
Color Grade **E**

Clarity Grade **VVS 2**

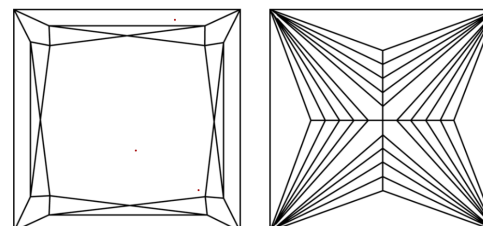


Sample Image Used

PROPORTIONS



CLARITY CHARACTERISTICS



KEY TO SYMBOLS

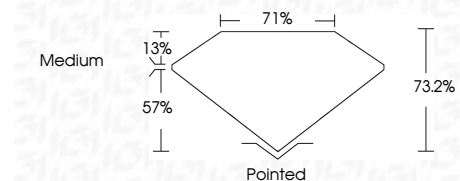
Red symbols indicate internal characteristics.
Green symbols indicate external characteristics.

COLOR

D E F G H I J Faint Very Light Light

CLARITY

IF	VS ¹⁻²	VS ¹⁻²	SI ¹⁻²	I ¹⁻³
Internally Flawless	Very Very Slightly Included	Very Slightly Included	Slightly Included	Included



ADDITIONAL GRADING INFORMATION

Polish **EXCELLENT**

Symmetry **EXCELLENT**

Fluorescence **NONE**

Inscription(s) **IGI LG646487125**

Comments: This Laboratory Grown Diamond was created by Chemical Vapor Deposition (CVD) growth process.
Type IIa



IGI



August 10, 2024
IGI Report No LG646487125
PRINCESS CUT

6.19 X 6.12 X 4.48 MM

1.52 CARAT
E

VVS 2
73.2%
71%
Medium

Pointed
EXCELLENT
EXCELLENT
NONE
IGI LG646487125

Comments: This Laboratory Grown Diamond was created by Chemical Vapor Deposition (CVD) growth process.
Type IIa