



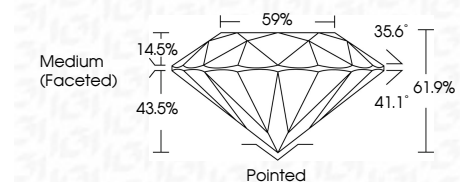
ELECTRONIC COPY

LG646489254 Report verification at igi.org



August 6, 2024 IGI Report Number LG646489254 Description LABORATORY GROWN DIAMOND Shape and Cutting Style ROUND BRILLIANT Measurements 6.55 - 6.58 X 4.06 MM

GRADING RESULTS Carat Weight 1.08 CARAT Color Grade E Clarity Grade VS 1 Cut Grade IDEAL



ADDITIONAL GRADING INFORMATION Polish EXCELLENT Symmetry EXCELLENT Fluorescence NONE Inscription(s) LG646489254 Comments: This Laboratory Grown Diamond was created by Chemical Vapor Deposition (CVD) growth process. Type IIa



August 6, 2024 IGI Report No LG646489254 ROUND BRILLIANT 6.55 - 6.58 X 4.06 MM 1.08 CARAT E VS 1 IDEAL 61.9% 59% Medium (Faceted) Pointed EXCELLENT EXCELLENT NONE NONE LG646489254

LABORATORY GROWN DIAMOND REPORT

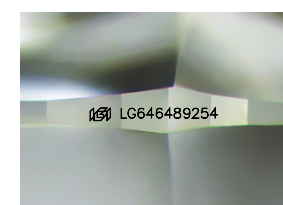
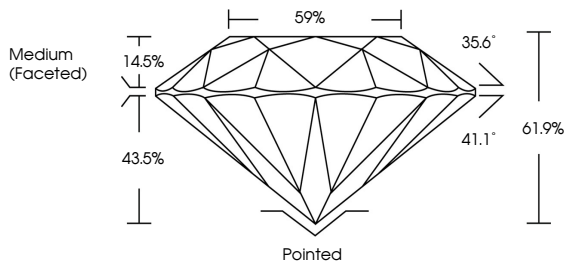
August 6, 2024 IGI Report Number LG646489254 Description LABORATORY GROWN DIAMOND Shape and Cutting Style ROUND BRILLIANT Measurements 6.55 - 6.58 X 4.06 MM

GRADING RESULTS Carat Weight 1.08 CARAT Color Grade E Clarity Grade VS 1 Cut Grade IDEAL

ADDITIONAL GRADING INFORMATION Polish EXCELLENT Symmetry EXCELLENT Fluorescence NONE Inscription(s) LG646489254

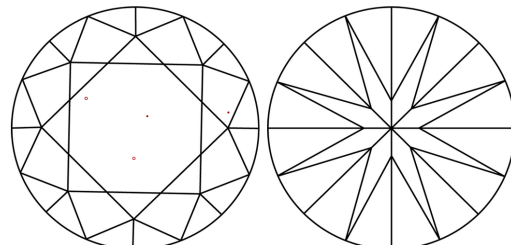
Comments: This Laboratory Grown Diamond was created by Chemical Vapor Deposition (CVD) growth process. Type IIa

PROPORTIONS



Sample Image Used

CLARITY CHARACTERISTICS



KEY TO SYMBOLS Red symbols indicate internal characteristics. Green symbols indicate external characteristics.

COLOR scale from D to J, with Very Light and Light labels.

CLARITY scale from IF to I 1-3, with Internally Flawless, Very Very Slightly Included, Very Slightly Included, Slightly Included, and Included labels.

