



ELECTRONIC COPY

LG646489937
Report verification at igi.org



August 6, 2024

IGI Report Number **LG646489937**

Description **LABORATORY GROWN DIAMOND**

Shape and Cutting Style **CUT CORNERED SQUARE
MODIFIED BRILLIANT**

Measurements **5.78 X 5.55 X 3.52 MM**

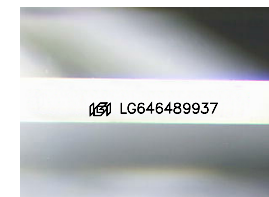
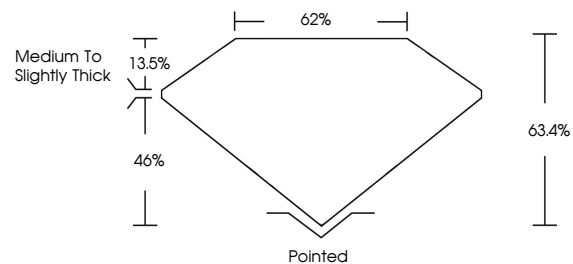
GRADING RESULTS

Carat Weight **1.05 CARAT**

Color Grade **E**

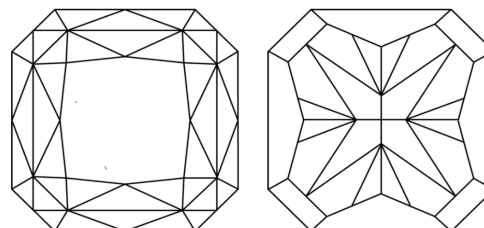
Clarity Grade **VVS 2**

PROPORTIONS



Sample Image Used

CLARITY CHARACTERISTICS



KEY TO SYMBOLS

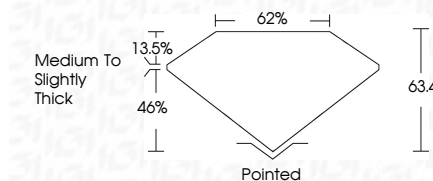
Red symbols indicate internal characteristics.
Green symbols indicate external characteristics.

COLOR

D E F G H I J Faint Very Light Light

CLARITY

IF	VS ¹⁻²	VS ¹⁻²	SI ¹⁻²	I ¹⁻³
Internally Flawless	Very Very Slightly Included	Very Slightly Included	Slightly Included	Included



ADDITIONAL GRADING INFORMATION

Polish **EXCELLENT**

Symmetry **EXCELLENT**

Fluorescence **NONE**

Inscription(s) **IGI LG646489937**

Comments: This Laboratory Grown Diamond was created by Chemical Vapor Deposition (CVD) growth process.
Type IIa



IGI



August 6, 2024
IGI Report No LG646489937
CUT CORNERED SQUARE MODIFIED BRILLIANT
5.78 X 5.55 X 3.52 MM
Carat Weight 1.05 CARAT
Color Grade E
Clarity Grade VVS 2
Table 62%
Girdle 62%
Medium to Slightly Thick
Culet Pointed
Polish EXCELLENT
Symmetry EXCELLENT
Fluorescence NONE
Inscription(s) IGI LG646489937
Comments: This Laboratory Grown Diamond was created by Chemical Vapor Deposition (CVD) growth process.
Type IIa