



ELECTRONIC COPY

LG646490467 Report verification at igi.org

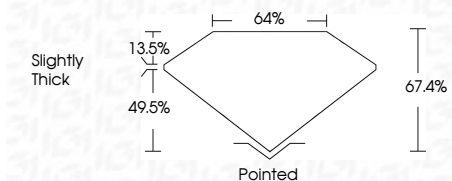


August 5, 2024 IGI Report Number LG646490467 Description LABORATORY GROWN DIAMOND Shape and Cutting Style CUT CORNERED RECTANGULAR MODIFIED BRILLIANT

Measurements 9.40 X 6.69 X 4.51 MM

GRADING RESULTS

Carat Weight 2.48 CARATS Color Grade D Clarity Grade VS 2



ADDITIONAL GRADING INFORMATION

Polish EXCELLENT Symmetry EXCELLENT Fluorescence NONE

Inscription(s) LG646490467

Comments: This Laboratory Grown Diamond was created by Chemical Vapor Deposition (CVD) growth process. Type IIa



August 5, 2024 IGI Report No LG646490467 CUT CORNERED RECT. MODIFIED BRILLIANT 9.40 X 6.69 X 4.51 MM 2.48 CARATS D VS 2 67.4% 64% Slightly Thick Pointed EXCELLENT EXCELLENT NONE LG646490467

Comments: This Laboratory Grown Diamond was created by Chemical Vapor Deposition (CVD) growth process. Type IIa

August 5, 2024 IGI Report Number LG646490467 Description LABORATORY GROWN DIAMOND Shape and Cutting Style CUT CORNERED RECTANGULAR MODIFIED BRILLIANT Measurements 9.40 X 6.69 X 4.51 MM

GRADING RESULTS

Carat Weight 2.48 CARATS Color Grade D Clarity Grade VS 2

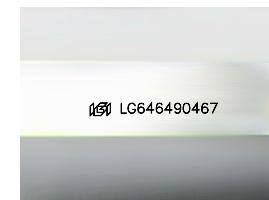
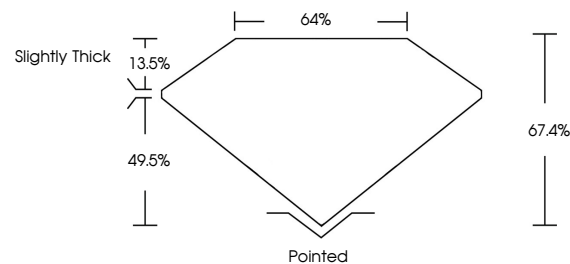
ADDITIONAL GRADING INFORMATION

Polish EXCELLENT Symmetry EXCELLENT Fluorescence NONE

Inscription(s) LG646490467

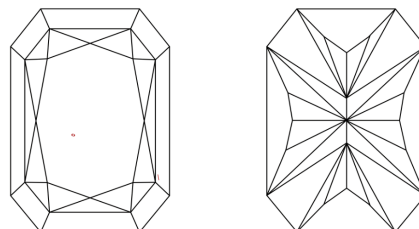
Comments: This Laboratory Grown Diamond was created by Chemical Vapor Deposition (CVD) growth process. Type IIa

PROPORTIONS



Sample Image Used

CLARITY CHARACTERISTICS



KEY TO SYMBOLS

Red symbols indicate internal characteristics. Green symbols indicate external characteristics.

COLOR

D E F G H I J Faint Very Light Light

CLARITY

IF VS 1-2 VS 1-2 SI 1-2 I 1-3 Internally Flawless Very Very Slightly Included Very Slightly Included Slightly Included Included

