



**INTERNATIONAL  
GEMOLOGICAL  
INSTITUTE**

LG647401324  
Report verification at [igi.org](http://igi.org)

**LIGHT PERFORMANCE REPORT**

**Light Performance Grade: Exceptional**



**Ideal-Scope representation**



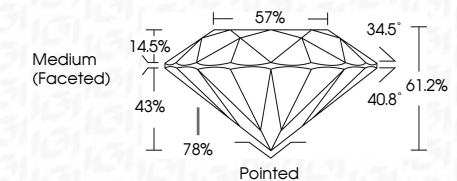
**COLOR**



**CLARITY**



August 6, 2024  
IGI Report Number **LG647401324**  
Description **LABORATORY GROWN DIAMOND**  
Shape and Cutting Style **ROUND BRILLIANT**  
Measurements **8.21 - 8.24 X 5.03 MM**  
**GRADING RESULTS**  
Carat Weight **2.08 CARATS**  
Color Grade **D**  
Clarity Grade **VVS 2**  
Cut Grade **IDEAL**



**ADDITIONAL GRADING INFORMATION**  
Polish **EXCELLENT**  
Symmetry **EXCELLENT**  
Fluorescence **NONE**  
Inscription(s) **IGI LG647401324**  
Comments: HEARTS & ARROWS  
This Laboratory Grown Diamond was created by Chemical Vapor Deposition (CVD) growth process. Type IIa

**ELECTRONIC COPY**

**LABORATORY GROWN DIAMOND REPORT**

August 6, 2024  
IGI Report Number **LG647401324**  
Description **LABORATORY GROWN DIAMOND**  
Shape and Cutting Style **ROUND BRILLIANT**  
Measurements **8.21 - 8.24 x 5.03 mm**

**GRADING RESULTS**

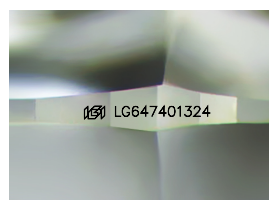
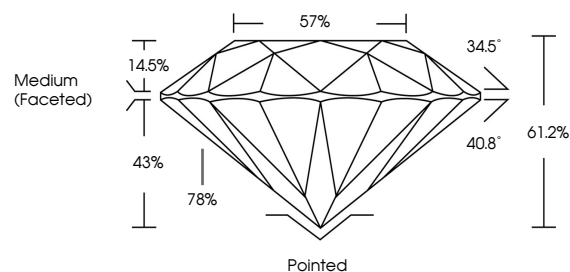
Carat Weight **2.08 CARATS**  
Color Grade **D**  
Clarity Grade **VVS 2**  
Cut Grade **IDEAL**

**ADDITIONAL GRADING INFORMATION**

Polish **EXCELLENT**  
Symmetry **EXCELLENT**  
Fluorescence **NONE**  
Inscription(s) **IGI LG647401324**

Comments: HEARTS & ARROWS  
This Laboratory Grown Diamond was created by Chemical Vapor Deposition (CVD) growth process. Type IIa

**PROPORTIONS**



Sample Image Used

[www.igi.org](http://www.igi.org)

© IGI 2020, International Gemological Institute FD - 10 20

THIS DOCUMENT WAS PRODUCED WITH THE FOLLOWING SECURITY MEASURES: SPECIAL DOCUMENT PAPER, INK SCREENS, WATERMARK, BACKGROUND DESIGNS, HOLOGRAM AND OTHER SECURITY FEATURES NOT LISTED AND DO EXCEED DOCUMENT SECURITY INDUSTRY GUIDELINES.



**IGI**

August 6, 2024  
IGI Report No **LG647401324**  
**ROUND BRILLIANT**  
**2.08 CARATS**  
Carat Weight **D**  
Color Grade **VVS 2**  
Clarity Grade **IDEAL**  
Depth **61.2%**  
Table **57%**  
Girdle **Medium (Faceted)**  
Culet **Pointed**  
Polish **EXCELLENT**  
Symmetry **EXCELLENT**  
Fluorescence **NONE**  
Inscription(s) **IGI LG647401324**  
Comments: HEARTS & ARROWS  
This Laboratory Grown Diamond was created by Chemical Vapor Deposition (CVD) growth process. Type IIa