



ELECTRONIC COPY

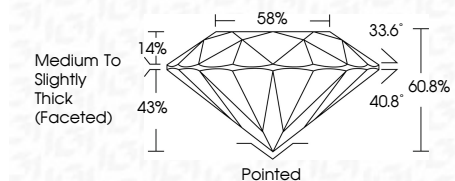
LG647407127
Report verification at igi.org



August 8, 2024
IGI Report Number LG647407127
Description LABORATORY GROWN DIAMOND
Shape and Cutting Style ROUND BRILLIANT
Measurements 10.99 - 11.05 X 6.70 MM

GRADING RESULTS

Carat Weight 5.02 CARATS
Color Grade F
Clarity Grade VS 2
Cut Grade IDEAL



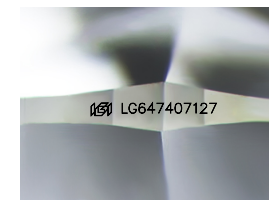
ADDITIONAL GRADING INFORMATION

Polish EXCELLENT
Symmetry EXCELLENT
Fluorescence NONE
Inscription(s) LG647407127
Comments: This Laboratory Grown Diamond was created by Chemical Vapor Deposition (CVD) growth process. Type IIa



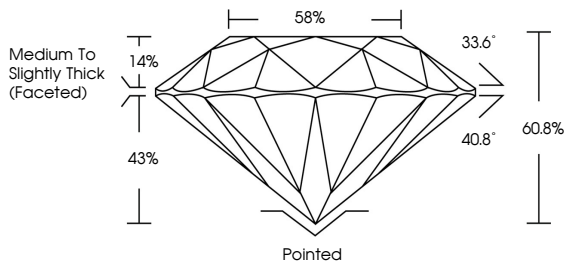
Table with 2 columns: Property and Value. Includes Carat Weight (5.02 CARATS), Color Grade (F), Clarity Grade (VS 2), Depth (60.8%), Table (58%), Girdle (Medium To Slightly Thick (Faceted)), Cut (Pointed), Polish (EXCELLENT), Symmetry (EXCELLENT), Fluorescence (NONE), and Inscription(s) (IGI LG647407127).

August 8, 2024
IGI Report No LG647407127
ROUND BRILLIANT
10.99 - 11.05 X 6.70 MM
5.02 CARATS
F
VS 2
IDEAL
60.8%
58%
Medium To Slightly Thick (Faceted)
Pointed
EXCELLENT
EXCELLENT
NONE
IGI LG647407127
Comments: This Laboratory Grown Diamond was created by Chemical Vapor Deposition (CVD) growth process. Type IIa

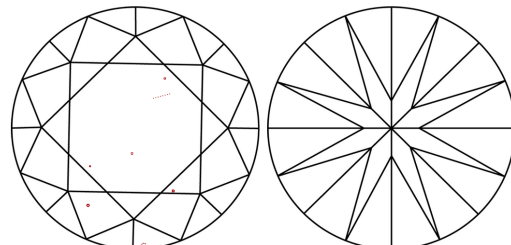


Sample Image Used

PROPORTIONS



CLARITY CHARACTERISTICS



KEY TO SYMBOLS

Red symbols indicate internal characteristics.
Green symbols indicate external characteristics.

COLOR

D E F G H I J Faint Very Light Light

CLARITY

IF VS 1-2 VS 1-2 SI 1-2 I 1-3
Internally Flawless Very Very Slightly Included Very Slightly Included Slightly Included Included

