



ELECTRONIC COPY

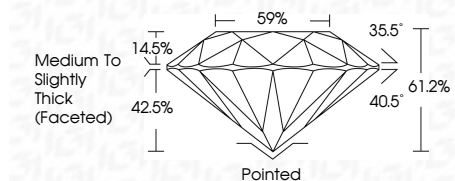
LG647410222
Report verification at igi.org



August 9, 2024
IGI Report Number LG647410222
Description LABORATORY GROWN DIAMOND
Shape and Cutting Style ROUND BRILLIANT
Measurements 8.08 - 8.12 X 4.96 MM

GRADING RESULTS

Carat Weight 2.03 CARATS
Color Grade F
Clarity Grade VS 2
Cut Grade IDEAL

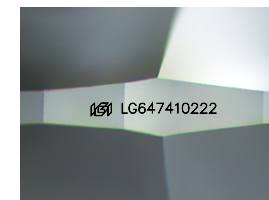


ADDITIONAL GRADING INFORMATION

Polish EXCELLENT
Symmetry EXCELLENT
Fluorescence NONE
Inscription(s) IGI LG647410222
Comments: This Laboratory Grown Diamond was created by Chemical Vapor Deposition (CVD) growth process. Type IIa

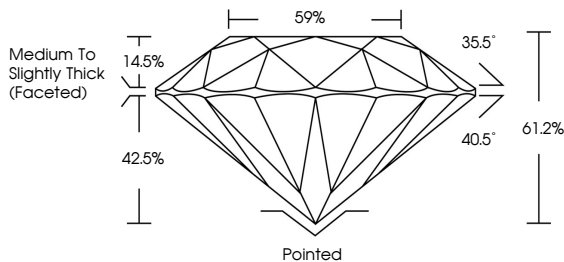


August 9, 2024
IGI Report No LG647410222
ROUND BRILLIANT
2.03 CARATS F
8.08 - 8.12 X 4.96 MM
Carat Weight
Color Grade VS 2
Clarity Grade IDEAL
Cut Grade 61.2%
Depth 59%
Table Medium To Slightly Thick (Faceted)
Girdle Pointed
Culet EXCELLENT
Polish EXCELLENT
Symmetry EXCELLENT
Fluorescence NONE
Inscription(s) IGI LG647410222
Comments: This Laboratory Grown Diamond was created by Chemical Vapor Deposition (CVD) growth process. Type IIa

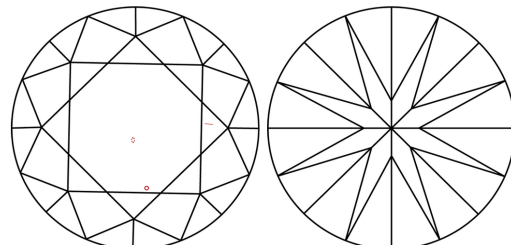


Sample Image Used

PROPORTIONS



CLARITY CHARACTERISTICS



KEY TO SYMBOLS

Red symbols indicate internal characteristics.
Green symbols indicate external characteristics.

COLOR

D E F G H I J Faint Very Light Light

CLARITY

IF VS 1-2 VS 1-2 SI 1-2 I 1-3
Internally Flawless Very Very Slightly Included Very Slightly Included Slightly Included Included

