



ELECTRONIC COPY

LG647410523
Report verification at igi.org

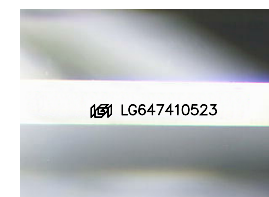


August 9, 2024
IGI Report Number **LG647410523**
Description **LABORATORY GROWN DIAMOND**
Shape and Cutting Style **CUT CORNERED
RECTANGULAR MODIFIED
BRILLIANT**

Measurements **8.63 X 6.21 X 4.22 MM**

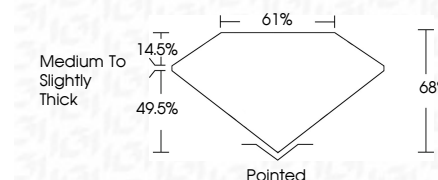
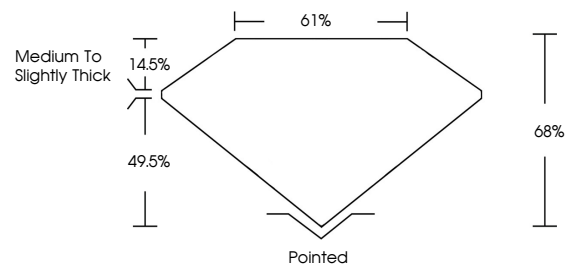
GRADING RESULTS

Carat Weight **1.89 CARAT**
Color Grade **D**
Clarity Grade **VVS 2**



Sample Image Used

PROPORTIONS



ADDITIONAL GRADING INFORMATION

Polish **EXCELLENT**
Symmetry **EXCELLENT**
Fluorescence **NONE**
Inscription(s) **IGI LG647410523**

Comments: This Laboratory Grown Diamond was created by Chemical Vapor Deposition (CVD) growth process.
Type IIa

COLOR

D E F G H I J Faint Very Light Light

CLARITY

IF	VS ¹⁻²	VS ¹⁻²	SI ¹⁻²	I ¹⁻³
Internally Flawless	Very Very Slightly Included	Very Slightly Included	Slightly Included	Included



IGI



August 9, 2024
IGI Report No LG647410523
CUT CORNERED RECT. MODIFIED BRILLIANT
8.63 X 6.21 X 4.22 MM
Carat Weight 1.89 CARAT
Color Grade D
Clarity Grade VVS 2
Depth 68%
Table 14.5%
Girdle Medium to Slightly Thick
Culet Pointed
Polish EXCELLENT
Symmetry EXCELLENT
Fluorescence NONE
Inscription(s) IGI LG647410523

Comments: This Laboratory Grown Diamond was created by Chemical Vapor Deposition (CVD) growth process.
Type IIa