



ELECTRONIC COPY

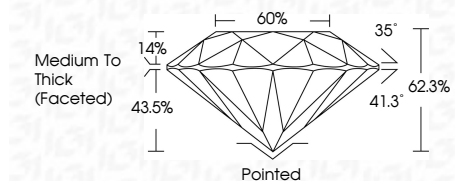
LG647412553
Report verification at igi.org



September 3, 2024
IGI Report Number LG647412553
Description LABORATORY GROWN DIAMOND
Shape and Cutting Style ROUND BRILLIANT
Measurements 7.95 - 8.01 X 4.97 MM

GRADING RESULTS

Carat Weight 1.98 CARAT
Color Grade F
Clarity Grade VVS 2
Cut Grade VERY GOOD

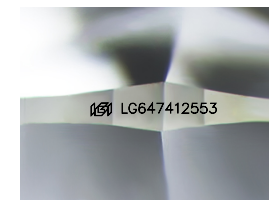


ADDITIONAL GRADING INFORMATION

Polish VERY GOOD
Symmetry VERY GOOD
Fluorescence NONE
Inscription(s) IGI LG647412553
Comments: This Laboratory Grown Diamond was created by Chemical Vapor Deposition (CVD) growth process. Type IIa

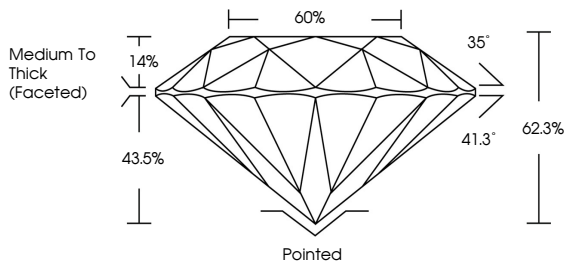


September 3, 2024
IGI Report No LG647412553
ROUND BRILLIANT
7.95 - 8.01 X 4.97 MM
1.98 CARAT
Color Grade F
Clarity Grade VVS 2
Depth 62.3%
Table 60%
Girdle Medium To Thick (Faceted)
Culet Pointed
Polish VERY GOOD
Symmetry VERY GOOD
Fluorescence NONE
Inscription(s) IGI LG647412553
Comments: This Laboratory Grown Diamond was created by Chemical Vapor Deposition (CVD) growth process. Type IIa

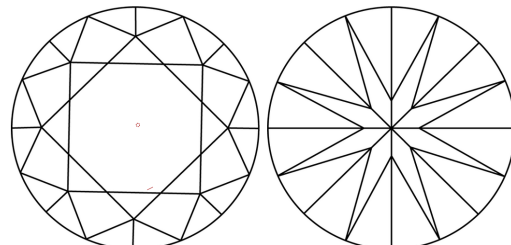


Sample Image Used

PROPORTIONS



CLARITY CHARACTERISTICS



KEY TO SYMBOLS

Red symbols indicate internal characteristics.
Green symbols indicate external characteristics.

COLOR

D E F G H I J Faint Very Light Light

CLARITY

IF VVS 1-2 VS 1-2 SI 1-2 I 1-3
Internally Flawless Very Very Slightly Included Very Slightly Included Slightly Included Included

