



ELECTRONIC COPY

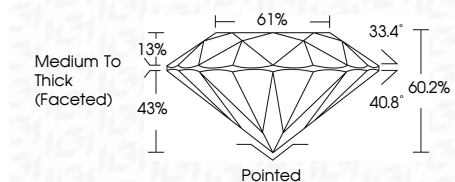
LG647412590 Report verification at igi.org



September 3, 2024 IGI Report Number LG647412590 Description LABORATORY GROWN DIAMOND Shape and Cutting Style ROUND BRILLIANT Measurements 8.12 - 8.19 X 4.91 MM

GRADING RESULTS

Carat Weight 2.03 CARATS Color Grade H Clarity Grade VS 1 Cut Grade VERY GOOD



ADDITIONAL GRADING INFORMATION

Polish VERY GOOD Symmetry VERY GOOD Fluorescence NONE Inscription(s) IGI LG647412590 Comments: This Laboratory Grown Diamond was created by Chemical Vapor Deposition (CVD) growth process. Type IIa



September 3, 2024 IGI Report No LG647412590 ROUND BRILLIANT 8.12 - 8.19 X 4.91 MM 2.03 CARATS H VS 1 VERY GOOD 60.2% 61% Medium To Thick (Faceted) Pointed VERY GOOD VERY GOOD VERY GOOD NONE NONE IGI LG647412590 Comments: This Laboratory Grown Diamond was created by Chemical Vapor Deposition (CVD) growth process. Type IIa

September 3, 2024 IGI Report Number LG647412590 Description LABORATORY GROWN DIAMOND Shape and Cutting Style ROUND BRILLIANT Measurements 8.12 - 8.19 X 4.91 MM

GRADING RESULTS

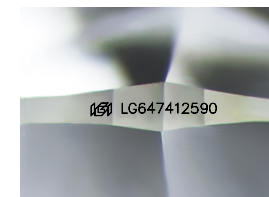
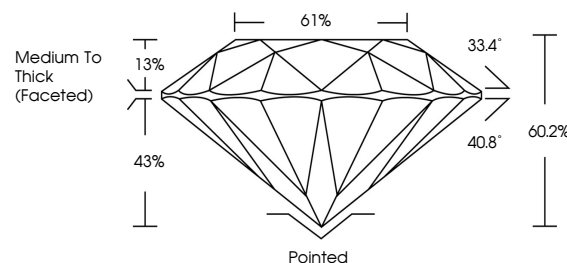
Carat Weight 2.03 CARATS Color Grade H Clarity Grade VS 1 Cut Grade VERY GOOD

ADDITIONAL GRADING INFORMATION

Polish VERY GOOD Symmetry VERY GOOD Fluorescence NONE Inscription(s) IGI LG647412590

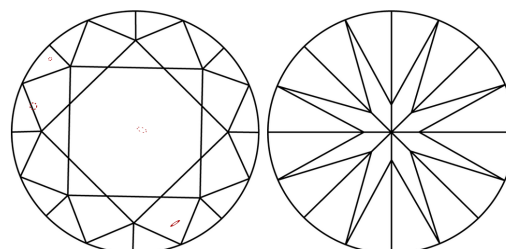
Comments: This Laboratory Grown Diamond was created by Chemical Vapor Deposition (CVD) growth process. Type IIa

PROPORTIONS



Sample Image Used

CLARITY CHARACTERISTICS



KEY TO SYMBOLS

Red symbols indicate internal characteristics. Green symbols indicate external characteristics.

COLOR

D E F G H I J Faint Very Light Light

CLARITY

IF WS 1-2 VS 1-2 SI 1-2 I 1-3 Internally Flawless Very Very Slightly Included Very Slightly Included Slightly Included Included

