



ELECTRONIC COPY

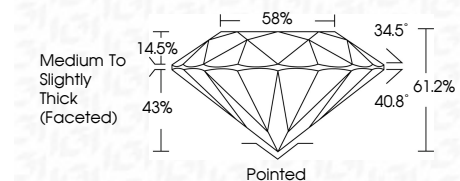
LG647412802 Report verification at igi.org



September 6, 2024 IGI Report Number LG647412802 Description LABORATORY GROWN DIAMOND Shape and Cutting Style ROUND BRILLIANT Measurements 6.47 - 6.52 X 3.98 MM

GRADING RESULTS

Carat Weight 1.04 CARAT Color Grade D Clarity Grade VVS 2 Cut Grade IDEAL



ADDITIONAL GRADING INFORMATION

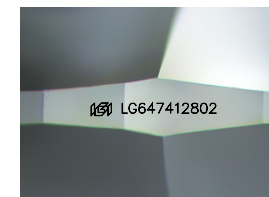
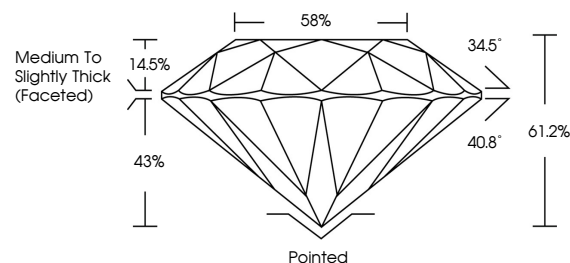
Polish EXCELLENT Symmetry EXCELLENT Fluorescence NONE Inscription(s) LG647412802 Comments: As Grown - No indication of post-growth treatment. This Laboratory Grown Diamond was created by High Pressure High Temperature (HPHT) growth process. Type II



September 6, 2024 IGI Report No LG647412802 ROUND BRILLIANT 6.47 - 6.52 X 3.98 MM 1.04 CARAT D VVS 2 IDEAL 6.47 - 6.52 X 3.98 MM Medium To Slightly Thick (Faceted) Pointed EXCELLENT EXCELLENT NONE LG647412802

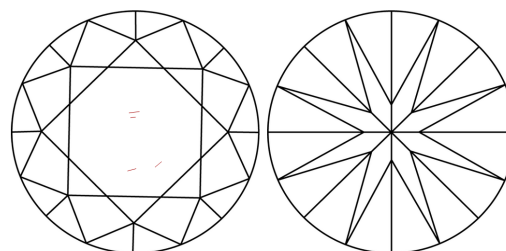
Comments: As Grown - No indication of post-growth treatment. This Laboratory Grown Diamond was created by High Pressure High Temperature (HPHT) growth process. Type II

PROPORTIONS



Sample Image Used

CLARITY CHARACTERISTICS



KEY TO SYMBOLS

Red symbols indicate internal characteristics. Green symbols indicate external characteristics.

COLOR

D E F G H I J Faint Very Light Light

CLARITY

IF VVS 1-2 VS 1-2 SI 1-2 I 1-3 Internally Flawless Very Very Slightly Included Very Slightly Included Slightly Included Included

