



**ELECTRONIC COPY**

LG647412809  
Report verification at igi.org



September 5, 2024

IGI Report Number **LG647412809**

Description **LABORATORY GROWN DIAMOND**

Shape and Cutting Style **EMERALD CUT**

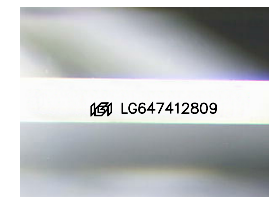
Measurements **8.38 X 5.75 X 3.85 MM**

**GRADING RESULTS**

Carat Weight **1.85 CARAT**

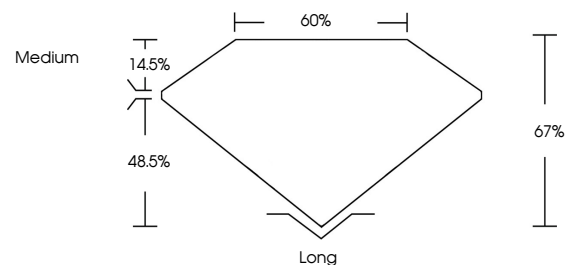
Color Grade **D**

Clarity Grade **VVS 2**

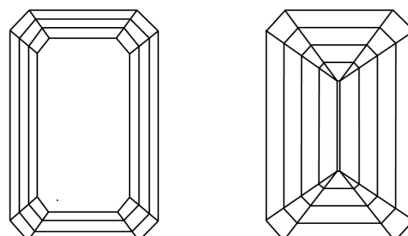


Sample Image Used

**PROPORTIONS**



**CLARITY CHARACTERISTICS**



**KEY TO SYMBOLS**

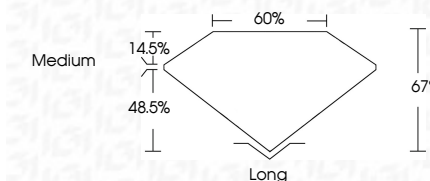
Red symbols indicate internal characteristics.  
Green symbols indicate external characteristics.

**COLOR**

D E F G H I J Faint Very Light Light

**CLARITY**

IF	VS <sup>1-2</sup>	VS <sup>1-2</sup>	SI <sup>1-2</sup>	I <sup>1-3</sup>
Internally Flawless	Very Very Slightly Included	Very Slightly Included	Slightly Included	Included



**ADDITIONAL GRADING INFORMATION**

Polish **EXCELLENT**

Symmetry **EXCELLENT**

Fluorescence **NONE**

Inscription(s) **IGI LG647412809**

Comments: As Grown - No indication of post-growth treatment.

This Laboratory Grown Diamond was created by High Pressure High Temperature (HPHT) growth process.

Type II



**IGI**

September 5, 2024	1.85 CARAT	D	67%	60%	Medium	Long
IGI Report No LG647412809	VVS 2	D	67%	60%	Medium	Long
EMERALD CUT	1.85 CARAT	D	67%	60%	Medium	Long
8.38 X 5.75 X 3.85 MM	VVS 2	D	67%	60%	Medium	Long
Color Grade	VVS 2	D	67%	60%	Medium	Long
Clarity Grade	VVS 2	D	67%	60%	Medium	Long
Table	14.5%	D	67%	60%	Medium	Long
Depth	48.5%	D	67%	60%	Medium	Long
Girdle	Medium	D	67%	60%	Medium	Long
Culet	None	D	67%	60%	Medium	Long
Polish	EXCELLENT	D	67%	60%	Medium	Long
Symmetry	EXCELLENT	D	67%	60%	Medium	Long
Fluorescence	NONE	D	67%	60%	Medium	Long
Inscription(s)	IGI LG647412809	D	67%	60%	Medium	Long

Comments: As Grown - No indication of post-growth treatment.  
This Laboratory Grown Diamond was created by High Pressure High Temperature (HPHT) growth process.  
Type II