



INTERNATIONAL GEMOLOGICAL INSTITUTE

ELECTRONIC COPY

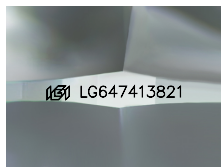
LG647413821



October 8, 2024
 IGI Report Number LG647413821
 ROUND BRILLIANT
 LABORATORY GROWN DIAMOND
 5.12 - 5.15 X 3.18 MM
 Carat Weight 0.51 CARAT
 Color Grade D
 Clarity Grade I.F.
 Cut Grade IDEAL
 Polish EXCELLENT
 Symmetry EXCELLENT
 Fluorescence NONE
 Inscription(s) IGI LG647413821

LABORATORY GROWN DIAMOND REPORT

October 8, 2024
 IGI Report Number LG647413821
 Description LABORATORY GROWN DIAMOND
 Shape and Cutting Style ROUND BRILLIANT
 Measurements 5.12 - 5.15 X 3.18 MM



Sample Image Used

GRADING RESULTS

Carat Weight 0.51 CARAT
 Color Grade D
 Clarity Grade INTERNALLY FLAWLESS
 Cut Grade IDEAL

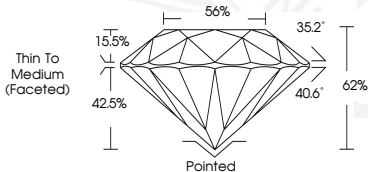
ADDITIONAL GRADING INFORMATION

Polish EXCELLENT
 Symmetry EXCELLENT
 Fluorescence NONE
 Inscription(s) IGI LG647413821

Comments: As Grown - No indication of post-growth treatment. This Laboratory Grown Diamond was created by High Pressure High Temperature (HPHT) growth process. Type II



October 8, 2024
 IGI Report Number LG647413821
 ROUND BRILLIANT
 LABORATORY GROWN DIAMOND
 5.12 - 5.15 X 3.18 MM
 Carat Weight 0.51 CARAT
 Color Grade D
 Clarity Grade I.F.
 Cut Grade IDEAL
 Polish EXCELLENT
 Symmetry EXCELLENT
 Fluorescence NONE
 Inscription(s) IGI LG647413821



THIS DOCUMENT WAS PRODUCED WITH THE FOLLOWING SECURITY MEASURES: SPECIAL DOCUMENT PAPER, INK SCREENS, WATERMARK, BACKGROUND DESIGNS, HOLOGRAM AND OTHER SECURITY FEATURES NOT LISTED AND DO EXCEED DOCUMENT SECURITY INDUSTRY GUIDELINES.

For terms & conditions and to verify this report, please visit www.igi.org