



ELECTRONIC COPY

LG647419335 Report verification at igi.org



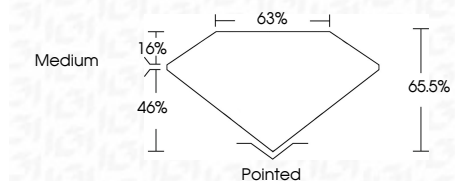
August 12, 2024 IGI Report Number LG647419335 Description LABORATORY GROWN DIAMOND

Shape and Cutting Style CUT CORNERED RECTANGULAR MODIFIED BRILLIANT

Measurements 12.43 X 8.76 X 5.74 MM

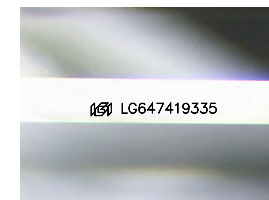
GRADING RESULTS

Carat Weight 5.56 CARATS Color Grade G Clarity Grade VS 2



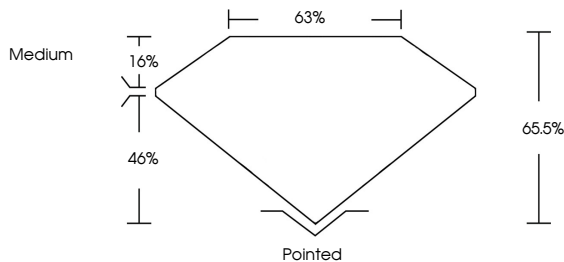
ADDITIONAL GRADING INFORMATION

Polish EXCELLENT Symmetry EXCELLENT Fluorescence NONE Inscription(s) LG647419335 Comments: This Laboratory Grown Diamond was created by Chemical Vapor Deposition (CVD) growth process. Type IIa

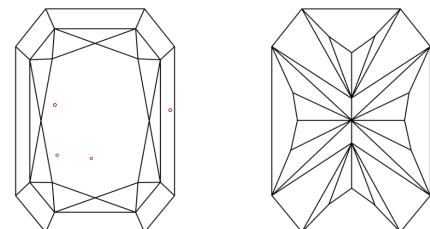


Sample Image Used

PROPORTIONS



CLARITY CHARACTERISTICS



KEY TO SYMBOLS Red symbols indicate internal characteristics. Green symbols indicate external characteristics.

COLOR

Color scale table with categories D, E, F, G, H, I, J, Faint, Very Light, Light

CLARITY

Clarity scale table with categories IF, VS 1-2, VS 1-2, SI 1-2, I 1-3, Internally Flawless, Very Very Slightly Included, Very Slightly Included, Slightly Included, Included



August 12, 2024 IGI Report No LG647419335 CUT CORNERED RECT. MODIFIED BRILLIANT 12.43 X 8.76 X 5.74 MM 5.56 CARATS G VS 2 65.5% 63% Medium Pointed EXCELLENT EXCELLENT NONE LG647419335 Comments: This Laboratory Grown Diamond was created by Chemical Vapor Deposition (CVD) growth process. Type IIa