



ELECTRONIC COPY

LABORATORY GROWN DIAMOND REPORT

August 12, 2024  
IGI Report Number **LG647422509**  
Description **LABORATORY GROWN DIAMOND**  
Shape and Cutting Style **EMERALD CUT**  
Measurements **12.22 X 8.09 X 5.32 MM**

GRADING RESULTS

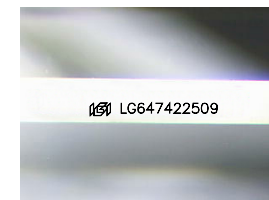
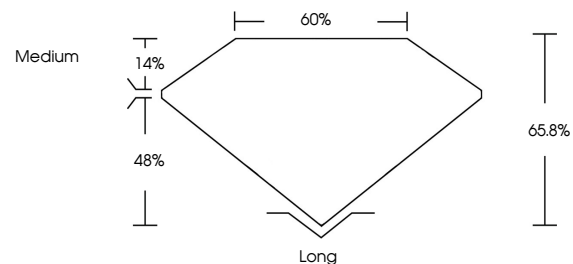
Carat Weight **5.12 CARATS**  
Color Grade **FANCY VIVID BROWNISH PINK**  
Clarity Grade **VS 1**

ADDITIONAL GRADING INFORMATION

Polish **EXCELLENT**  
Symmetry **EXCELLENT**  
Fluorescence **SLIGHT**  
Inscription(s) **IGI LG647422509**

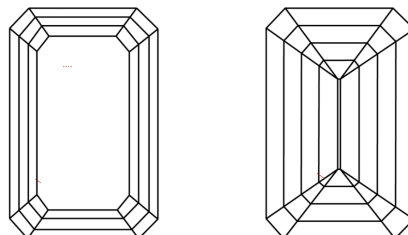
Comments: This Laboratory Grown Diamond was created by Chemical Vapor Deposition (CVD) growth process.  
Indications of post-growth treatment.

PROPORTIONS



Sample Image Used

CLARITY CHARACTERISTICS



KEY TO SYMBOLS

Red symbols indicate internal characteristics.  
Green symbols indicate external characteristics.

COLOR

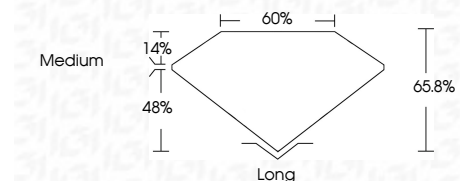
D E F G H I J Faint Very Light Light

CLARITY

IF WS<sup>1-2</sup> VS<sup>1-2</sup> SI<sup>1-2</sup> I<sup>1-3</sup>  
Internally Flawless Very Very Slightly Included Very Slightly Included Slightly Included Included



August 12, 2024  
IGI Report Number **LG647422509**  
Description **LABORATORY GROWN DIAMOND**  
Shape and Cutting Style **EMERALD CUT**  
Measurements **12.22 X 8.09 X 5.32 MM**  
GRADING RESULTS  
Carat Weight **5.12 CARATS**  
Color Grade **FANCY VIVID BROWNISH PINK**  
Clarity Grade **VS 1**



ADDITIONAL GRADING INFORMATION

Polish **EXCELLENT**  
Symmetry **EXCELLENT**  
Fluorescence **SLIGHT**  
Inscription(s) **IGI LG647422509**  
Comments: This Laboratory Grown Diamond was created by Chemical Vapor Deposition (CVD) growth process.  
Indications of post-growth treatment.



August 12, 2024  
IGI Report No **LG647422509**  
EMERALD CUT  
5.12 CARATS  
12.22 X 8.09 X 5.32 MM  
Carat Weight  
Color Grade **FANCY VIVID BROWNISH PINK**  
Clarity Grade **VS 1**  
Depth **65.8%**  
Table **60%**  
Girdle **Medium**  
Culet **Long**  
Polish **EXCELLENT**  
Symmetry **EXCELLENT**  
Fluorescence **SLIGHT**  
Inscription(s) **IGI LG647422509**  
Comments: This Laboratory Grown Diamond was created by Chemical Vapor Deposition (CVD) growth process.  
Indications of post-growth treatment.