



ELECTRONIC COPY

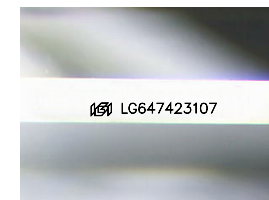
LG647423107
Report verification at igi.org



August 8, 2024
IGI Report Number **LG647423107**
Description **LABORATORY GROWN DIAMOND**
Shape and Cutting Style **EMERALD CUT**
Measurements **8.14 X 5.59 X 3.76 MM**

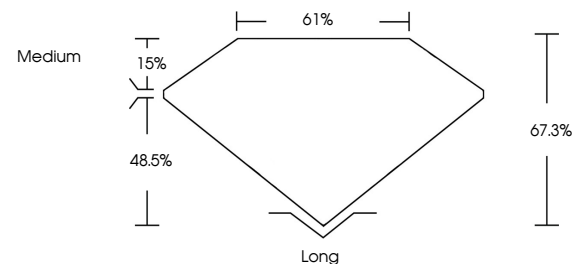
GRADING RESULTS

Carat Weight **1.71 CARAT**
Color Grade **D**
Clarity Grade **VS 2**

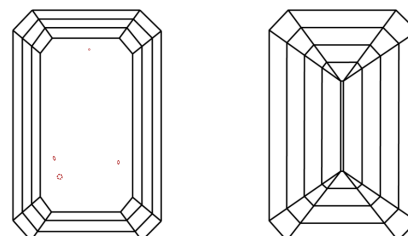


Sample Image Used

PROPORTIONS



CLARITY CHARACTERISTICS



KEY TO SYMBOLS

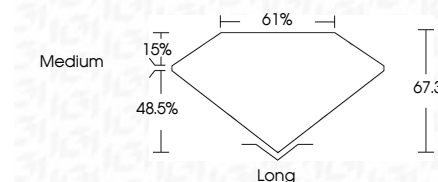
Red symbols indicate internal characteristics.
Green symbols indicate external characteristics.

COLOR

D E F G H I J Faint Very Light Light

CLARITY

IF	VS ¹⁻²	VS ¹⁻²	SI ¹⁻²	I ¹⁻³
Internally Flawless	Very Very Slightly Included	Very Slightly Included	Slightly Included	Included



ADDITIONAL GRADING INFORMATION

Polish **EXCELLENT**
Symmetry **EXCELLENT**
Fluorescence **NONE**
Inscription(s) **IGI LG647423107**
Comments: This Laboratory Grown Diamond was created by Chemical Vapor Deposition (CVD) growth process.
Type IIa



IGI



August 8, 2024
IGI Report No **LG647423107**
EMERALD CUT
8.14 X 5.59 X 3.76 MM
Carat Weight **1.71 CARAT**
Color Grade **D**
Clarity Grade **VS 2**
Depth **67.3%**
Table **61%**
Girdle **Medium**
Culet **Long**
Polish **EXCELLENT**
Symmetry **EXCELLENT**
Fluorescence **NONE**
Inscription(s) **IGI LG647423107**
Comments: This Laboratory Grown Diamond was created by Chemical Vapor Deposition (CVD) growth process.
Type IIa