



ELECTRONIC COPY

LG647424585
Report verification at igi.org



August 16, 2024
IGI Report Number **LG647424585**
Description **LABORATORY GROWN DIAMOND**
Shape and Cutting Style **CUSHION BRILLIANT**
Measurements **6.26 X 5.18 X 3.49 MM**
GRADING RESULTS
Carat Weight **1.00 CARAT**
Color Grade **FANCY YELLOW**
Clarity Grade **VS 1**

August 16, 2024
IGI Report Number **LG647424585**
Description **LABORATORY GROWN DIAMOND**
Shape and Cutting Style **CUSHION BRILLIANT**
Measurements **6.26 X 5.18 X 3.49 MM**

GRADING RESULTS

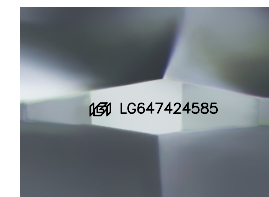
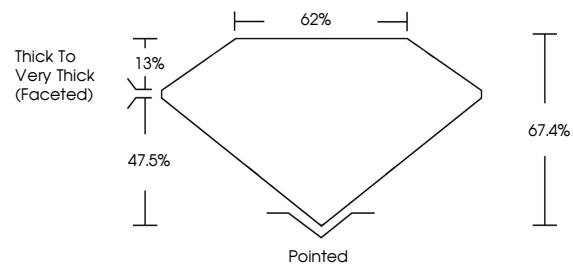
Carat Weight **1.00 CARAT**
Color Grade **FANCY YELLOW**
Clarity Grade **VS 1**

ADDITIONAL GRADING INFORMATION

Polish **EXCELLENT**
Symmetry **EXCELLENT**
Fluorescence **NONE**
Inscription(s) **IGI LG647424585**

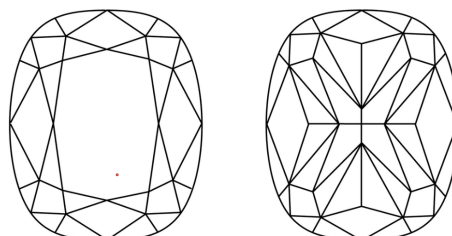
Comments: This Laboratory Grown Diamond was created by Chemical Vapor Deposition (CVD) growth process.

PROPORTIONS



Sample Image Used

CLARITY CHARACTERISTICS



KEY TO SYMBOLS

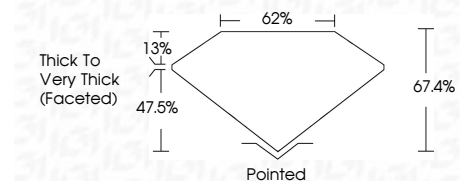
Red symbols indicate internal characteristics.
Green symbols indicate external characteristics.

COLOR

D E F G H I J Faint Very Light Light

CLARITY

| | | | | |
|---------------------|-----------------------------|------------------------|-------------------|------------------|
| IF | VS ¹⁻² | VS ¹⁻² | SI ¹⁻² | I ¹⁻³ |
| Internally Flawless | Very Very Slightly Included | Very Slightly Included | Slightly Included | Included |



ADDITIONAL GRADING INFORMATION

Polish **EXCELLENT**
Symmetry **EXCELLENT**
Fluorescence **NONE**
Inscription(s) **IGI LG647424585**
Comments: This Laboratory Grown Diamond was created by Chemical Vapor Deposition (CVD) growth process.



August 16, 2024
IGI Report No **LG647424585**
CUSHION BRILLIANT
6.26 X 5.18 X 3.49 MM
Carat Weight **1.00 CARAT**
Color Grade **FANCY YELLOW**
Clarity Grade **VS 1**
Depth **67.4%**
Table **62%**
Girdle **Thick to Very Thick (Faceted)**
Culet **Pointed**
Polish **EXCELLENT**
Symmetry **EXCELLENT**
Fluorescence **NONE**
Inscription(s) **IGI LG647424585**
Comments: This Laboratory Grown Diamond was created by Chemical Vapor Deposition (CVD) growth process.