



**ELECTRONIC COPY**

LG647439616  
Report verification at igi.org



August 8, 2024

IGI Report Number **LG647439616**

Description **LABORATORY GROWN DIAMOND**

Shape and Cutting Style **ROUND BRILLIANT**

Measurements **7.86 - 7.88 X 4.79 MM**

**GRADING RESULTS**

Carat Weight **1.82 CARAT**

Color Grade **E**

Clarity Grade **VS 1**

Cut Grade **IDEAL**

August 8, 2024

IGI Report Number **LG647439616**

Description **LABORATORY GROWN DIAMOND**

Shape and Cutting Style **ROUND BRILLIANT**

Measurements **7.86 - 7.88 X 4.79 MM**

**GRADING RESULTS**

Carat Weight **1.82 CARAT**

Color Grade **E**

Clarity Grade **VS 1**

Cut Grade **IDEAL**

**ADDITIONAL GRADING INFORMATION**

Polish **EXCELLENT**

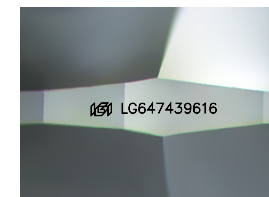
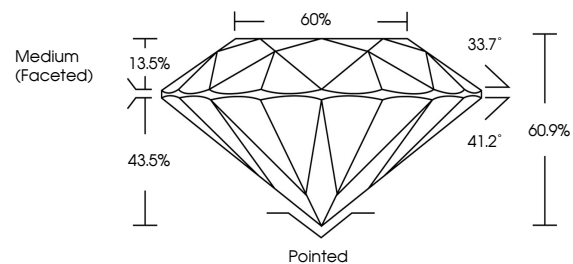
Symmetry **EXCELLENT**

Fluorescence **NONE**

Inscription(s) **IGI LG647439616**

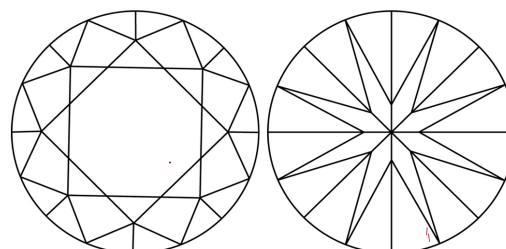
Comments: This Laboratory Grown Diamond was created by Chemical Vapor Deposition (CVD) growth process. Type IIa

**PROPORTIONS**



Sample Image Used

**CLARITY CHARACTERISTICS**



**KEY TO SYMBOLS**

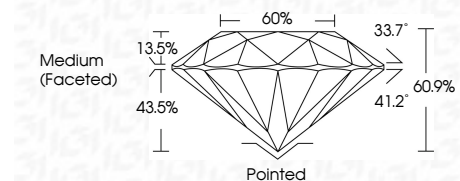
Red symbols indicate internal characteristics.  
Green symbols indicate external characteristics.

**COLOR**

D E F G H I J Faint Very Light Light

**CLARITY**

IF	VS <sup>1-2</sup>	VS <sup>1-2</sup>	SI <sup>1-2</sup>	I <sup>1-3</sup>
Internally Flawless	Very Very Slightly Included	Very Slightly Included	Slightly Included	Included



**ADDITIONAL GRADING INFORMATION**

Polish **EXCELLENT**

Symmetry **EXCELLENT**

Fluorescence **NONE**

Inscription(s) **IGI LG647439616**

Comments: This Laboratory Grown Diamond was created by Chemical Vapor Deposition (CVD) growth process. Type IIa



**IGI**



August 8, 2024  
IGI Report No LG647439616  
ROUND BRILLIANT

7.86 - 7.88 X 4.79 MM  
1.82 CARAT  
E  
VS 1  
IDEAL  
60.9%  
60%

Medium (Faceted)

Pointed  
EXCELLENT  
EXCELLENT  
NONE  
NONE

IGI LG647439616

Comments: This Laboratory Grown Diamond was created by Chemical Vapor Deposition (CVD) growth process. Type IIa