



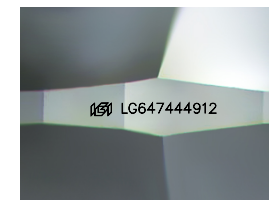
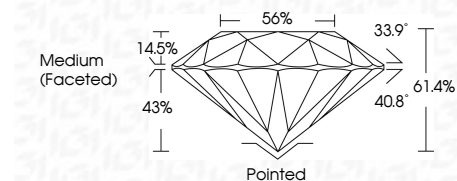
ELECTRONIC COPY

LG647444912
Report verification at igi.org



August 10, 2024
IGI Report Number LG647444912
Description LABORATORY GROWN DIAMOND
Shape and Cutting Style ROUND BRILLIANT
Measurements 6.77 - 6.78 X 4.16 MM

GRADING RESULTS
Carat Weight 1.17 CARAT
Color Grade E
Clarity Grade VS 1
Cut Grade IDEAL



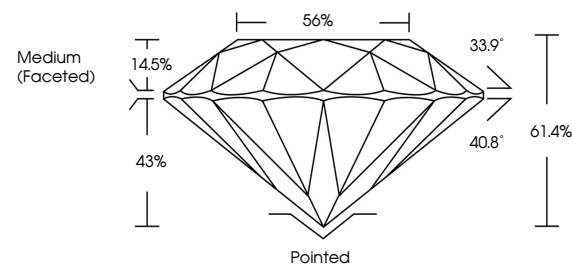
Sample Image Used

ADDITIONAL GRADING INFORMATION
Polish EXCELLENT
Symmetry EXCELLENT
Fluorescence NONE
Inscription(s) IGI LG647444912
Comments: This Laboratory Grown Diamond was created by Chemical Vapor Deposition (CVD) growth process. Type IIa

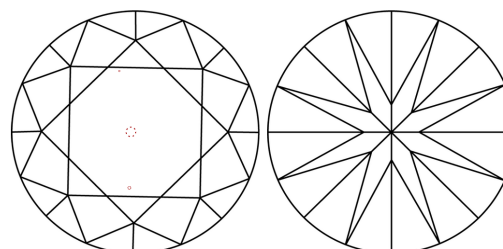


August 10, 2024
IGI Report No LG647444912
ROUND BRILLIANT
6.77 - 6.78 X 4.16 MM
1.17 CARAT E
Color Grade VS 1 IDEAL
Clarity Grade 61.4% 56%
Medium (Faceted)
Cut Grade IDEAL
Pointed EXCELLENT EXCELLENT NONE
None IGI LG647444912
Comments: This Laboratory Grown Diamond was created by Chemical Vapor Deposition (CVD) growth process. Type IIa

PROPORTIONS



CLARITY CHARACTERISTICS



KEY TO SYMBOLS

Red symbols indicate internal characteristics.
Green symbols indicate external characteristics.

COLOR

D E F G H I J Faint Very Light Light

CLARITY

IF VS 1-2 VS 1-2 SI 1-2 I 1-3
Internally Flawless Very Very Slightly Included Very Slightly Included Slightly Included Included

