



ELECTRONIC COPY

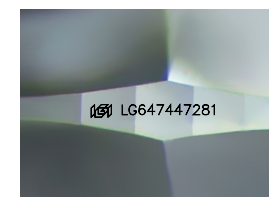
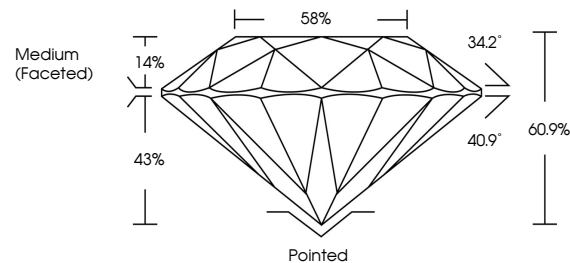
LG647447281
Report verification at igi.org



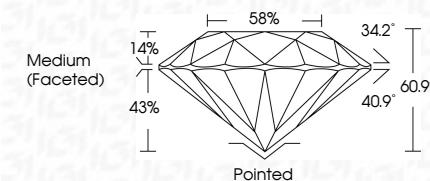
August 9, 2024
IGI Report Number LG647447281
Description LABORATORY GROWN DIAMOND
Shape and Cutting Style ROUND BRILLIANT
Measurements 8.23 - 8.25 X 5.02 MM
GRADING RESULTS
Carat Weight 2.09 CARATS
Color Grade E
Clarity Grade VVS 2
Cut Grade IDEAL

August 9, 2024
IGI Report Number LG647447281
Description LABORATORY GROWN DIAMOND
Shape and Cutting Style ROUND BRILLIANT
Measurements 8.23 - 8.25 X 5.02 MM
GRADING RESULTS
Carat Weight 2.09 CARATS
Color Grade E
Clarity Grade VVS 2
Cut Grade IDEAL

PROPORTIONS



Sample Image Used



ADDITIONAL GRADING INFORMATION

Polish EXCELLENT
Symmetry EXCELLENT
Fluorescence NONE
Inscription(s) LG647447281

Comments: This Laboratory Grown Diamond was created by Chemical Vapor Deposition (CVD) growth process. Type IIa

ADDITIONAL GRADING INFORMATION

Polish EXCELLENT
Symmetry EXCELLENT
Fluorescence NONE
Inscription(s) LG647447281
Comments: This Laboratory Grown Diamond was created by Chemical Vapor Deposition (CVD) growth process. Type IIa

COLOR

D E F G H I J Faint Very Light Light

CLARITY

IF VVS 1-2 VS 1-2 SI 1-2 I 1-3
Internally Flawless Very Very Slightly Included Very Slightly Included Slightly Included Included



August 9, 2024
IGI Report No LG647447281
ROUND BRILLIANT
8.23 - 8.25 X 5.02 MM
2.09 CARATS
Color Grade E
Clarity Grade VVS 2
Depth 60.9%
Table 58%
Medium (Faceted)
Cutler Pointed
Polish EXCELLENT
Symmetry EXCELLENT
Fluorescence NONE
Inscription(s) LG647447281
Comments: This Laboratory Grown Diamond was created by Chemical Vapor Deposition (CVD) growth process. Type IIa