



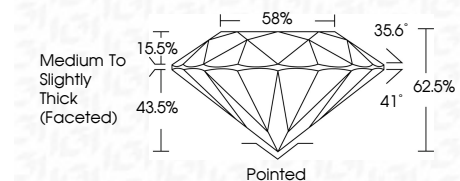
ELECTRONIC COPY

LG647449532
Report verification at igi.org



August 10, 2024
IGI Report Number LG647449532
Description LABORATORY GROWN DIAMOND
Shape and Cutting Style ROUND BRILLIANT
Measurements 8.10 - 8.11 X 5.07 MM

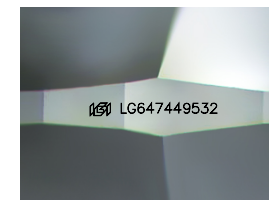
GRADING RESULTS
Carat Weight 2.07 CARATS
Color Grade H
Clarity Grade VS 1
Cut Grade IDEAL



ADDITIONAL GRADING INFORMATION
Polish EXCELLENT
Symmetry EXCELLENT
Fluorescence NONE
Inscription(s) IGI LG647449532
Comments: This Laboratory Grown Diamond was created by Chemical Vapor Deposition (CVD) growth process. Type IIa

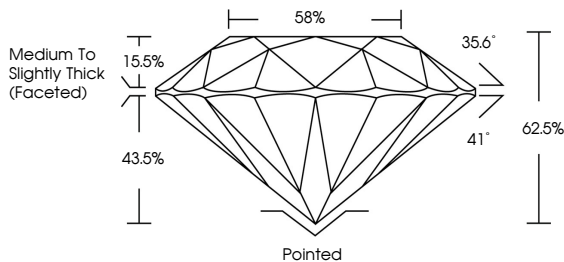


August 10, 2024
IGI Report No LG647449532
ROUND BRILLIANT
8.10 - 8.11 X 5.07 MM
2.07 CARATS H
Color Grade VS 1 IDEAL
Clarity Grade VS 1 IDEAL
Depth 62.5%
Table 58%
Medium To Slightly Thick (Faceted)
Pointed EXCELLENT EXCELLENT NONE
Cutler Polish Symmetry Fluorescence Incriptions(s)
IGI LG647449532
Comments: This Laboratory Grown Diamond was created by Chemical Vapor Deposition (CVD) growth process. Type IIa

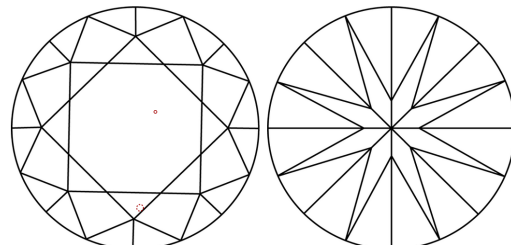


Sample Image Used

PROPORTIONS



CLARITY CHARACTERISTICS



KEY TO SYMBOLS
Red symbols indicate internal characteristics.
Green symbols indicate external characteristics.

COLOR

Table with color grades: D, E, F, G, H, I, J, Faint, Very Light, Light

CLARITY

Table with clarity grades: IF, VS 1-2, VS 1-2, SI 1-2, I 1-3, Internally Flawless, Very Very Slightly Included, Very Slightly Included, Slightly Included, Included



August 10, 2024
IGI Report Number LG647449532
Description LABORATORY GROWN DIAMOND
Shape and Cutting Style ROUND BRILLIANT
Measurements 8.10 - 8.11 X 5.07 MM

GRADING RESULTS
Carat Weight 2.07 CARATS
Color Grade H
Clarity Grade VS 1
Cut Grade IDEAL

ADDITIONAL GRADING INFORMATION
Polish EXCELLENT
Symmetry EXCELLENT
Fluorescence NONE
Inscription(s) IGI LG647449532

Comments: This Laboratory Grown Diamond was created by Chemical Vapor Deposition (CVD) growth process. Type IIa