



**INTERNATIONAL
GEMOLOGICAL
INSTITUTE**

ELECTRONIC COPY

LG647450110



August 12, 2024
IGI Report Number LG647450110
**CUT CORNERED RECTANGULAR
 MODIFIED BRILLIANT
 LABORATORY GROWN DIAMOND**
5.98 X 4.10 X 2.72 MM
 Carat Weight **0.53 CARAT**
 Color Grade **D**
 Clarity Grade **VVS 2**
 Polish **EXCELLENT**
 Symmetry **EXCELLENT**
 Fluorescence **NONE**
 Inscription(s) **IGI LG647450110**
 Comments: This Laboratory Grown
 Diamond was created by
 Chemical Vapor Deposition (CVD)
 growth process. Type IIa

LABORATORY GROWN DIAMOND REPORT

August 12, 2024
 IGI Report Number **LG647450110**
 Description **LABORATORY GROWN DIAMOND**
 Shape and Cutting Style **CUT CORNERED RECTANGULAR MODIFIED
 BRILLIANT**
 Measurements **5.98 X 4.10 X 2.72 MM**

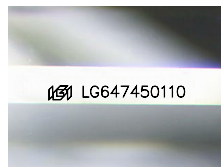
GRADING RESULTS

Carat Weight **0.53 CARAT**
 Color Grade **D**
 Clarity Grade **VVS 2**

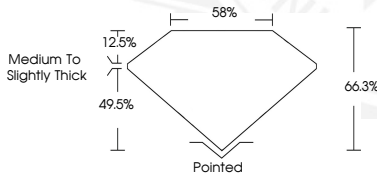
ADDITIONAL GRADING INFORMATION

Polish **EXCELLENT**
 Symmetry **EXCELLENT**
 Fluorescence **NONE**
 Inscription(s) **IGI LG647450110**

Comments: This Laboratory Grown Diamond was created by
 Chemical Vapor Deposition (CVD) growth process.
 Type IIa



Sample Image Used



August 12, 2024
IGI Report Number LG647450110
**CUT CORNERED RECTANGULAR
 MODIFIED BRILLIANT
 LABORATORY GROWN DIAMOND**
5.98 X 4.10 X 2.72 MM
 Carat Weight **0.53 CARAT**
 Color Grade **D**
 Clarity Grade **VVS 2**
 Polish **EXCELLENT**
 Symmetry **EXCELLENT**
 Fluorescence **NONE**
 Inscription(s) **IGI LG647450110**
 Comments: This Laboratory Grown
 Diamond was created by
 Chemical Vapor Deposition (CVD)
 growth process. Type IIa

THIS DOCUMENT WAS PRODUCED WITH THE FOLLOWING SECURITY MEASURES: SPECIAL DOCUMENT PAPER, INK SCREENS, WATERMARK, BACKGROUND DESIGN, HOLOGRAM AND OTHER SECURITY FEATURES NOT LISTED AND DO EXCEED DOCUMENT SECURITY INDUSTRY GUIDELINES.

For terms & conditions and to verify this report, please visit www.igi.org