



ELECTRONIC COPY

LABORATORY GROWN DIAMOND REPORT

August 10, 2024	
IGI Report Number	LG647450429
Description	LABORATORY GROWN DIAMOND
Shape and Cutting Style	EMERALD CUT
Measurements	8.43 X 5.88 X 3.84 MM

GRADING RESULTS

Carat Weight	1.88 CARAT
Color Grade	E
Clarity Grade	SI 1

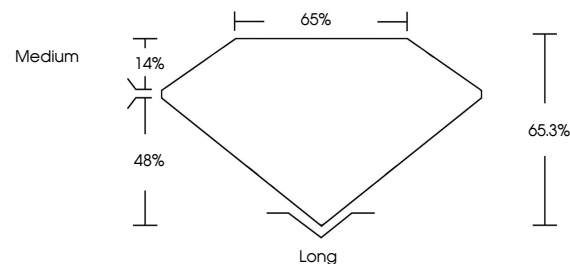
ADDITIONAL GRADING INFORMATION

Polish	EXCELLENT
Symmetry	EXCELLENT
Fluorescence	NONE
Inscription(s)	 LG647450429

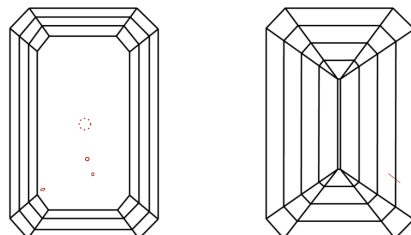
Comments: This Laboratory Grown Diamond was created by Chemical Vapor Deposition (CVD) growth process.
Type IIa

LG647450429
Report verification at igi.org

PROPORTIONS

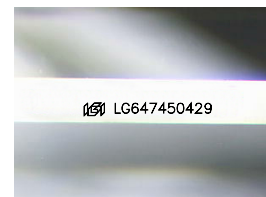


CLARITY CHARACTERISTICS



KEY TO SYMBOLS

Red symbols indicate internal characteristics.
Green symbols indicate external characteristics.



Sample Image Used

COLOR

D E F G H I J Faint Very Light Light

CLARITY

IF	VVS ¹⁻²	VS ¹⁻²	SI ¹⁻²	I ¹⁻³
Internally Flawless	Very Very Slightly Included	Very Slightly Included	Slightly Included	Included



© IGI 2020, International Gemological Institute

FD - 10 20

www.igi.org

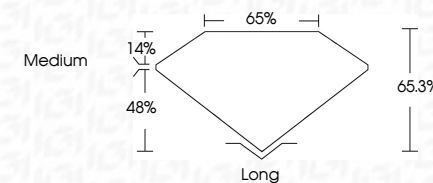
LABORATORY GROWN DIAMOND REPORT



August 10, 2024	
IGI Report Number	LG647450429
Description	LABORATORY GROWN DIAMOND
Shape and Cutting Style	EMERALD CUT
Measurements	8.43 X 5.88 X 3.84 MM

GRADING RESULTS

Carat Weight	1.88 CARAT
Color Grade	E
Clarity Grade	SI 1



ADDITIONAL GRADING INFORMATION

Polish	EXCELLENT
Symmetry	EXCELLENT
Fluorescence	NONE
Inscription(s)	 LG647450429
Comments: This Laboratory Grown Diamond was created by Chemical Vapor Deposition (CVD) growth process.	
Type IIa	



August 10, 2024
GI Report No LG647450429

GI Report No. 15647450029	1.88 CARAT	
HERAUD CUT	E	
3.43 X 5.68 X 3.64 MM	SI 1	Long
	65.3%	EXCELLENT
	65%	EXCELLENT
	Medium	NONE
		Color Certificate

Comments:
This Laboratory Grown Diamond was created by Chemical Vapor Deposition (CVD) growth process.