



**INTERNATIONAL  
GEMOLOGICAL  
INSTITUTE**

**ELECTRONIC COPY**

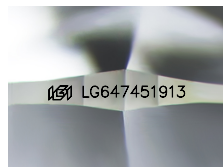
**LG647451913**



August 12, 2024  
**IGI Report Number** LG647451913  
**ROUND BRILLIANT**  
**LABORATORY GROWN DIAMOND**  
**5.26 - 5.29 X 3.20 MM**  
 Carat Weight **0.54 CARAT**  
 Color Grade **D**  
 Clarity Grade **VVS 2**  
 Cut Grade **IDEAL**  
 Polish **EXCELLENT**  
 Symmetry **EXCELLENT**  
 Fluorescence **NONE**  
 Inscription(s) **IGI LG647451913**

**LABORATORY GROWN DIAMOND REPORT**

August 12, 2024  
 IGI Report Number **LG647451913**  
 Description **LABORATORY GROWN DIAMOND**  
 Shape and Cutting Style **ROUND BRILLIANT**  
 Measurements **5.26 - 5.29 X 3.20 MM**



Sample Image Used

Comments: This Laboratory Grown Diamond was created by Chemical Vapor Deposition (CVD) growth process. Type IIa

**GRADING RESULTS**

Carat Weight **0.54 CARAT**  
 Color Grade **D**  
 Clarity Grade **VVS 2**  
 Cut Grade **IDEAL**

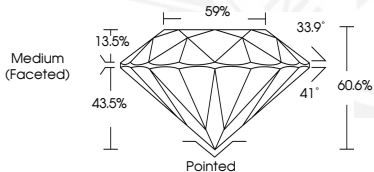
**ADDITIONAL GRADING INFORMATION**

Polish **EXCELLENT**  
 Symmetry **EXCELLENT**  
 Fluorescence **NONE**  
 Inscription(s) **IGI LG647451913**

Comments: This Laboratory Grown Diamond was created by Chemical Vapor Deposition (CVD) growth process. Type IIa



August 12, 2024  
**IGI Report Number** LG647451913  
**ROUND BRILLIANT**  
**LABORATORY GROWN DIAMOND**  
**5.26 - 5.29 X 3.20 MM**  
 Carat Weight **0.54 CARAT**  
 Color Grade **D**  
 Clarity Grade **VVS 2**  
 Cut Grade **IDEAL**  
 Polish **EXCELLENT**  
 Symmetry **EXCELLENT**  
 Fluorescence **NONE**  
 Inscription(s) **IGI LG647451913**



THIS DOCUMENT WAS PRODUCED WITH THE FOLLOWING SECURITY MEASURES: SPECIAL DOCUMENT PAPER, INK SCREENS, WATERMARK, BACKGROUND DESIGN, HOLOGRAM AND OTHER SECURITY FEATURES NOT LISTED AND DO EXCEED DOCUMENT SECURITY INDUSTRY GUIDELINES.

For terms & conditions and to verify this report, please visit [www.igi.org](http://www.igi.org)