



**INTERNATIONAL  
GEMOLOGICAL  
INSTITUTE**

**ELECTRONIC COPY**

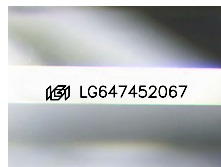
**LG647452067**



August 13, 2024  
**IGI Report Number** LG647452067  
**EMERALD CUT**  
**LABORATORY GROWN DIAMOND**  
**5.28 X 3.83 X 2.51 MM**  
 Carat Weight **0.51 CARAT**  
 Color Grade **F**  
 Clarity Grade **VVS 2**  
 Polish **VERY GOOD**  
 Symmetry **EXCELLENT**  
 Fluorescence **NONE**  
 Inscription(s) **IGI LG647452067**

**LABORATORY GROWN DIAMOND REPORT**

August 13, 2024  
 IGI Report Number **LG647452067**  
 Description **LABORATORY GROWN DIAMOND**  
 Shape and Cutting Style **EMERALD CUT**  
 Measurements **5.28 X 3.83 X 2.51 MM**



Sample Image Used

Comments: As Grown - No indication of post-growth treatment. This Laboratory Grown Diamond was created by High Pressure High Temperature (HPHT) growth process. Type II

**GRADING RESULTS**

Carat Weight **0.51 CARAT**  
 Color Grade **F**  
 Clarity Grade **VVS 2**

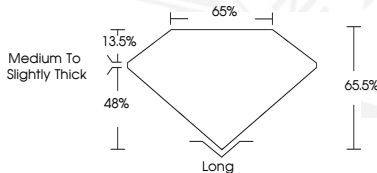
**ADDITIONAL GRADING INFORMATION**

Polish **VERY GOOD**  
 Symmetry **EXCELLENT**  
 Fluorescence **NONE**  
 Inscription(s) **IGI LG647452067**

Comments: As Grown - No indication of post-growth treatment. This Laboratory Grown Diamond was created by High Pressure High Temperature (HPHT) growth process. Type II



August 13, 2024  
**IGI Report Number** LG647452067  
**EMERALD CUT**  
**LABORATORY GROWN DIAMOND**  
**5.28 X 3.83 X 2.51 MM**  
 Carat Weight **0.51 CARAT**  
 Color Grade **F**  
 Clarity Grade **VVS 2**  
 Polish **VERY GOOD**  
 Symmetry **EXCELLENT**  
 Fluorescence **NONE**  
 Inscription(s) **IGI LG647452067**



THIS DOCUMENT WAS PRODUCED WITH THE FOLLOWING SECURITY MEASURES: SPECIAL DOCUMENT PAPER, INK SCREENS, WATERMARK, BACKGROUND DESIGN, HOLOGRAM AND OTHER SECURITY FEATURES NOT LISTED AND DO EXCEED DOCUMENT SECURITY INDUSTRY GUIDELINES.

For terms & conditions and to verify this report, please visit [www.igi.org](http://www.igi.org)