



**INTERNATIONAL
GEMOLOGICAL
INSTITUTE**

ELECTRONIC COPY

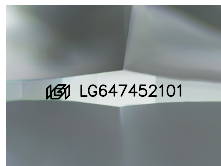
LG647452101



August 12, 2024
IGI Report Number LG647452101
ROUND BRILLIANT
LABORATORY GROWN DIAMOND
5.92 - 5.97 X 3.59 MM
Carat Weight 0.77 CARAT
Color Grade G
Clarity Grade SI 1
Cut Grade IDEAL
Polish EXCELLENT
Symmetry EXCELLENT
Fluorescence NONE
Inscription(s) IGI LG647452101

LABORATORY GROWN DIAMOND REPORT

August 12, 2024
 IGI Report Number **LG647452101**
 Description **LABORATORY GROWN DIAMOND**
 Shape and Cutting Style **ROUND BRILLIANT**
 Measurements **5.92 - 5.97 X 3.59 MM**



Sample Image Used

GRADING RESULTS

Carat Weight 0.77 CARAT
Color Grade G
Clarity Grade SI 1
Cut Grade IDEAL

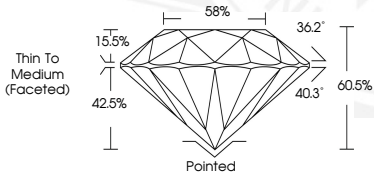
ADDITIONAL GRADING INFORMATION

Polish EXCELLENT
Symmetry EXCELLENT
Fluorescence NONE
Inscription(s) IGI LG647452101

Comments: This Laboratory Grown Diamond was created by Chemical Vapor Deposition (CVD) growth process. Type IIa



August 12, 2024
IGI Report Number LG647452101
ROUND BRILLIANT
LABORATORY GROWN DIAMOND
5.92 - 5.97 X 3.59 MM
Carat Weight 0.77 CARAT
Color Grade G
Clarity Grade SI 1
Cut Grade IDEAL
Polish EXCELLENT
Symmetry EXCELLENT
Fluorescence NONE
Inscription(s) IGI LG647452101



Comments: This Laboratory Grown Diamond was created by Chemical Vapor Deposition (CVD) growth process. Type IIa

THIS DOCUMENT WAS PRODUCED WITH THE FOLLOWING SECURITY MEASURES: SPECIAL DOCUMENT PAPER, INK SCREENS, WATERMARK, BACKGROUND DESIGN, HOLOGRAM AND OTHER SECURITY FEATURES NOT LISTED AND DO EXCEED DOCUMENT SECURITY INDUSTRY GUIDELINES.

For terms & conditions and to verify this report, please visit www.igi.org