



**INTERNATIONAL
GEMOLOGICAL
INSTITUTE**

ELECTRONIC COPY

LG647453934



August 12, 2024
IGI Report Number LG647453934
ROUND BRILLIANT
LABORATORY GROWN DIAMOND
5.77 - 5.81 X 3.52 MM
 Carat Weight **0.72 CARAT**
 Color Grade **D**
 Clarity Grade **VVS 2**
 Cut Grade **IDEAL**
 Polish **EXCELLENT**
 Symmetry **EXCELLENT**
 Fluorescence **NONE**
 Inscription(s) **IGI LG647453934**

LABORATORY GROWN DIAMOND REPORT

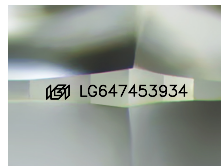
August 12, 2024
 IGI Report Number **LG647453934**
 Description **LABORATORY GROWN DIAMOND**
 Shape and Cutting Style **ROUND BRILLIANT**
 Measurements **5.77 - 5.81 X 3.52 MM**



HEARTS & ARROWS

GRADING RESULTS

Carat Weight **0.72 CARAT**
 Color Grade **D**
 Clarity Grade **VVS 2**
 Cut Grade **IDEAL**

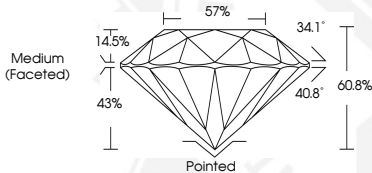


Sample Image Used

ADDITIONAL GRADING INFORMATION

Polish **EXCELLENT**
 Symmetry **EXCELLENT**
 Fluorescence **NONE**
 Inscription(s) **IGI LG647453934**

Comments: **HEARTS & ARROWS**
 This Laboratory Grown Diamond was created by Chemical Vapor Deposition (CVD) growth process.
 Type Iia



August 12, 2024
IGI Report Number LG647453934
ROUND BRILLIANT
LABORATORY GROWN DIAMOND
5.77 - 5.81 X 3.52 MM
 Carat Weight **0.72 CARAT**
 Color Grade **D**
 Clarity Grade **VVS 2**
 Cut Grade **IDEAL**
 Polish **EXCELLENT**
 Symmetry **EXCELLENT**
 Fluorescence **NONE**
 Inscription(s) **IGI LG647453934**

Comments: **HEARTS & ARROWS** This Laboratory Grown Diamond was created by Chemical Vapor Deposition (CVD) growth process.
 Type Iia

THIS DOCUMENT WAS PRODUCED WITH THE FOLLOWING SECURITY MEASURES: SPECIAL DOCUMENT PAPER, INK SCREENS, WATERMARK, BACKGROUND DESIGNS, HOLOGRAM AND OTHER SECURITY FEATURES NOT LISTED AND DO EXCEED DOCUMENT SECURITY INDUSTRY GUIDELINES.

For terms & conditions and to verify this report, please visit www.igi.org