



ELECTRONIC COPY

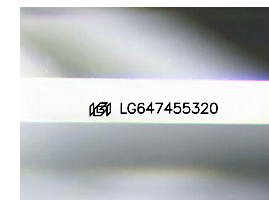
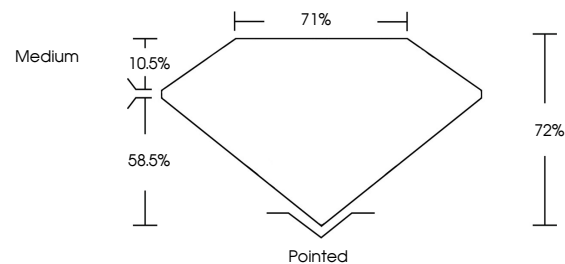
LG647455320
Report verification at igi.org



August 12, 2024
IGI Report Number **LG647455320**
Description **LABORATORY GROWN DIAMOND**
Shape and Cutting Style **PRINCESS CUT**
Measurements **7.08 X 7.07 X 5.09 MM**
GRADING RESULTS
Carat Weight **2.16 CARATS**
Color Grade **E**
Clarity Grade **VS 1**

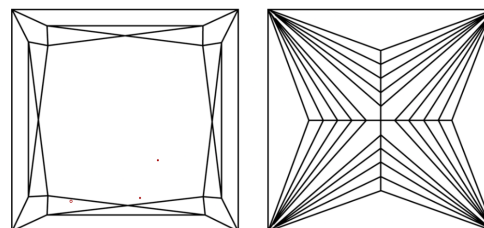
August 12, 2024
IGI Report Number **LG647455320**
Description **LABORATORY GROWN DIAMOND**
Shape and Cutting Style **PRINCESS CUT**
Measurements **7.08 X 7.07 X 5.09 MM**

PROPORTIONS



Sample Image Used

CLARITY CHARACTERISTICS



KEY TO SYMBOLS

Red symbols indicate internal characteristics.
Green symbols indicate external characteristics.

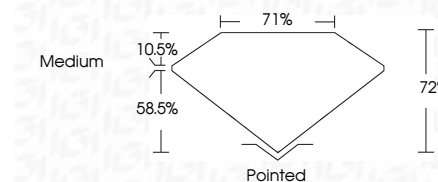
GRADING RESULTS

Carat Weight **2.16 CARATS**
Color Grade **E**
Clarity Grade **VS 1**

ADDITIONAL GRADING INFORMATION

Polish **EXCELLENT**
Symmetry **EXCELLENT**
Fluorescence **NONE**
Inscription(s) **IGI LG647455320**

Comments: This Laboratory Grown Diamond was created by Chemical Vapor Deposition (CVD) growth process.
Type IIa



ADDITIONAL GRADING INFORMATION

Polish **EXCELLENT**
Symmetry **EXCELLENT**
Fluorescence **NONE**
Inscription(s) **IGI LG647455320**
Comments: This Laboratory Grown Diamond was created by Chemical Vapor Deposition (CVD) growth process.
Type IIa

COLOR

D E F G H I J Faint Very Light Light

CLARITY

IF	VS ¹⁻²	VS ¹⁻²	SI ¹⁻²	I ¹⁻³
Internally Flawless	Very Very Slightly Included	Very Slightly Included	Slightly Included	Included



IGI



August 12, 2024
IGI Report No LG647455320
PRINCESS CUT
7.08 X 7.07 X 5.09 MM
2.16 CARATS
E
VS 1
72%
71%
Medium
Pointed
EXCELLENT
EXCELLENT
NONE
IGI LG647455320
Comments: This Laboratory Grown Diamond was created by Chemical Vapor Deposition (CVD) growth process.
Type IIa