



ELECTRONIC COPY

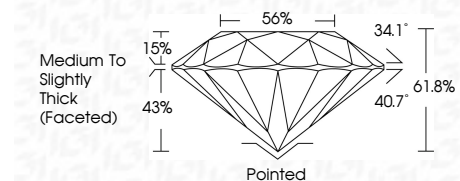
LG647455428
Report verification at igi.org



August 13, 2024
IGI Report Number LG647455428
Description LABORATORY GROWN DIAMOND
Shape and Cutting Style ROUND BRILLIANT
Measurements 7.76 - 7.79 X 4.81 MM

GRADING RESULTS

Carat Weight 1.80 CARAT
Color Grade F
Clarity Grade VS 1
Cut Grade IDEAL

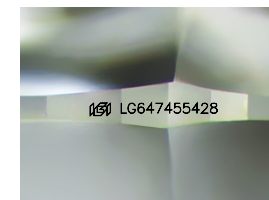


ADDITIONAL GRADING INFORMATION

Polish EXCELLENT
Symmetry EXCELLENT
Fluorescence NONE
Inscription(s) IGI LG647455428
Comments: This Laboratory Grown Diamond was created by Chemical Vapor Deposition (CVD) growth process. Type IIa

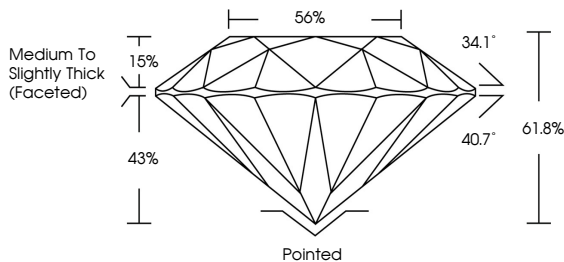


August 13, 2024
IGI Report No LG647455428
ROUND BRILLIANT
7.76 - 7.79 X 4.81 MM
1.80 CARAT F
Color Grade VS 1 IDEAL
Clarity Grade 61.8% 56%
Cut Grade Medium To Slightly Thick (Faceted)
Pointed EXCELLENT EXCELLENT NONE
Polish EXCELLENT EXCELLENT NONE
Symmetry EXCELLENT EXCELLENT NONE
Fluorescence NONE
Inscription(s) IGI LG647455428
Comments: This Laboratory Grown Diamond was created by Chemical Vapor Deposition (CVD) growth process. Type IIa

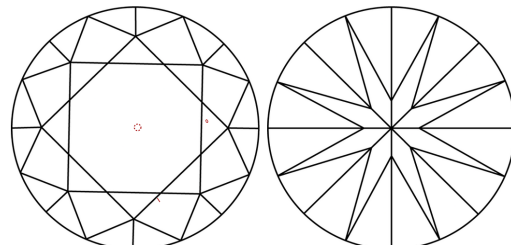


Sample Image Used

PROPORTIONS



CLARITY CHARACTERISTICS



KEY TO SYMBOLS

Red symbols indicate internal characteristics.
Green symbols indicate external characteristics.

COLOR

D E F G H I J Faint Very Light Light

CLARITY

IF VS 1-2 VS 1-2 SI 1-2 I 1-3
Internally Flawless Very Very Slightly Included Very Slightly Included Slightly Included Included

