



ELECTRONIC COPY

LG647456062
Report verification at igi.org



August 10, 2024

IGI Report Number **LG647456062**

Description **LABORATORY GROWN DIAMOND**

Shape and Cutting Style **ROUND BRILLIANT**

Measurements **7.32 - 7.33 X 4.64 MM**

GRADING RESULTS

Carat Weight **1.53 CARAT**

Color Grade **H**

Clarity Grade **VVS 2**

Cut Grade **EXCELLENT**

August 10, 2024
IGI Report Number **LG647456062**
Description **LABORATORY GROWN DIAMOND**
Shape and Cutting Style **ROUND BRILLIANT**
Measurements **7.32 - 7.33 X 4.64 MM**

GRADING RESULTS

Carat Weight **1.53 CARAT**

Color Grade **H**

Clarity Grade **VVS 2**

Cut Grade **EXCELLENT**

ADDITIONAL GRADING INFORMATION

Polish **EXCELLENT**

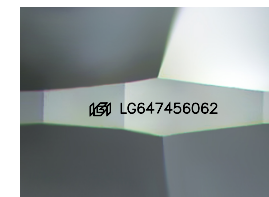
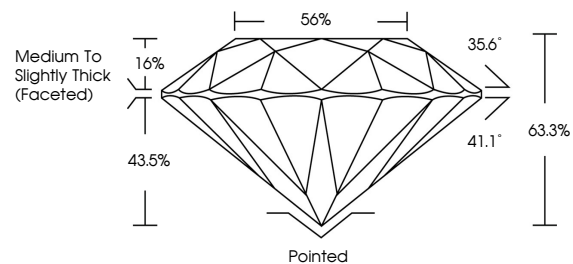
Symmetry **EXCELLENT**

Fluorescence **NONE**

Inscription(s) **IGI LG647456062**

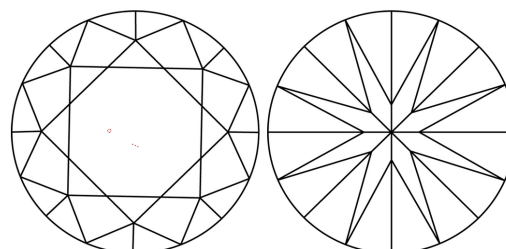
Comments: This Laboratory Grown Diamond was created by Chemical Vapor Deposition (CVD) growth process. Type IIa

PROPORTIONS



Sample Image Used

CLARITY CHARACTERISTICS



KEY TO SYMBOLS

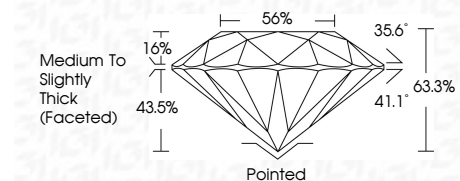
Red symbols indicate internal characteristics.
Green symbols indicate external characteristics.

COLOR

D E F G H I J Faint Very Light Light

CLARITY

IF	VS ¹⁻²	VS ¹⁻²	SI ¹⁻²	I ¹⁻³
Internally Flawless	Very Very Slightly Included	Very Slightly Included	Slightly Included	Included



ADDITIONAL GRADING INFORMATION

Polish **EXCELLENT**

Symmetry **EXCELLENT**

Fluorescence **NONE**

Inscription(s) **IGI LG647456062**

Comments: This Laboratory Grown Diamond was created by Chemical Vapor Deposition (CVD) growth process. Type IIa



August 10, 2024
IGI Report No LG647456062
ROUND BRILLIANT

7.32 - 7.33 X 4.64 MM

Carat Weight **1.53 CARAT**
Color Grade **H**
Clarity Grade **VVS 2**
Cut Grade **EXCELLENT**
Depth **63.3%**
Table **56%**
Girdle **Medium To Slightly Thick (Faceted)**

Culet **Pointed**
Polish **EXCELLENT**
Symmetry **EXCELLENT**
Fluorescence **NONE**
Inscription(s) **IGI LG647456062**

Comments: This Laboratory Grown Diamond was created by Chemical Vapor Deposition (CVD) growth process. Type IIa