



ELECTRONIC COPY

LG647457219
Report verification at igi.org



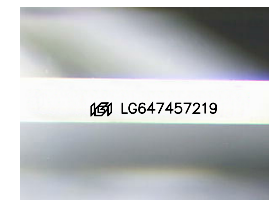
August 12, 2024
IGI Report Number **LG647457219**
Description **LABORATORY GROWN DIAMOND**

Shape and Cutting Style **CUT CORNERED
RECTANGULAR MODIFIED
BRILLIANT**

Measurements **8.58 X 5.70 X 3.75 MM**

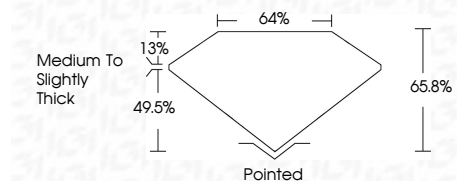
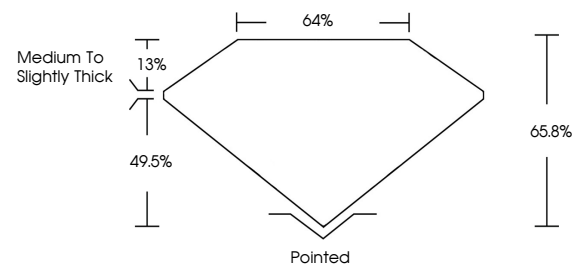
GRADING RESULTS

Carat Weight **1.65 CARAT**
Color Grade **F**
Clarity Grade **VS 1**
Cut Grade **EXCELLENT**

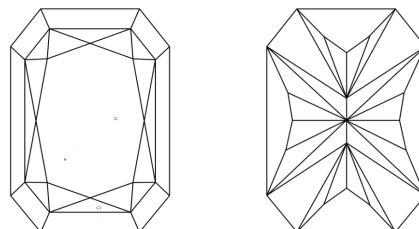


Sample Image Used

PROPORTIONS



CLARITY CHARACTERISTICS



KEY TO SYMBOLS

Red symbols indicate internal characteristics.
Green symbols indicate external characteristics.

COLOR

D E F G H I J Faint Very Light Light

CLARITY

IF	VS ¹⁻²	VS ¹⁻²	SI ¹⁻²	I ¹⁻³
Internally Flawless	Very Very Slightly Included	Very Slightly Included	Slightly Included	Included

ADDITIONAL GRADING INFORMATION

Polish **EXCELLENT**
Symmetry **EXCELLENT**
Fluorescence **NONE**
Inscription(s) **IGI LG647457219**
Comments: This Laboratory Grown Diamond was created by Chemical Vapor Deposition (CVD) growth process. Type IIa



IGI



August 12, 2024
IGI Report No LG647457219
CUT CORNERED RECT. MODIFIED BRILLIANT
8.58 X 5.70 X 3.75 MM
1.65 CARAT
F
VS 1
EXCELLENT
66.0%
64%
Medium To Slightly Thick
Pointed
EXCELLENT
EXCELLENT
NONE
IGI LG647457219
Comments: This Laboratory Grown Diamond was created by Chemical Vapor Deposition (CVD) growth process. Type IIa