



ELECTRONIC COPY

LG647457283
Report verification at igi.org

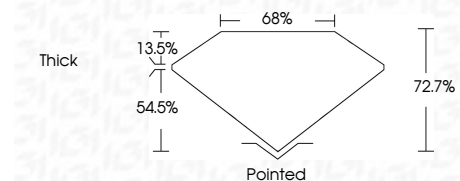


August 23, 2024
IGI Report Number **LG647457283**
Description **LABORATORY GROWN DIAMOND**
Shape and Cutting Style **CUT CORNERED
RECTANGULAR MODIFIED
BRILLIANT**

Measurements **8.45 X 6.04 X 4.39 MM**

GRADING RESULTS

Carat Weight **2.00 CARATS**
Color Grade **FANCY YELLOW**
Clarity Grade **VS 2**



ADDITIONAL GRADING INFORMATION

Polish **EXCELLENT**
Symmetry **EXCELLENT**
Fluorescence **SLIGHT**
Inscription(s) **IGI LG647457283**

Comments: This Laboratory Grown Diamond was created by Chemical Vapor Deposition (CVD) growth process. Indications of post-growth treatment.



August 23, 2024
IGI Report No LG647457283
CUT CORNERED RECT. MODIFIED BRILLIANT
8.45 X 6.04 X 4.39 MM
2.00 CARATS
FANCY YELLOW
VS 2
72.7%
68%
Thick
Pointed
EXCELLENT
EXCELLENT
SLIGHT
IGI LG647457283
Comments: This Laboratory Grown Diamond was created by Chemical Vapor Deposition (CVD) growth process. Indications of post-growth treatment.

LABORATORY GROWN DIAMOND REPORT

August 23, 2024
IGI Report Number **LG647457283**
Description **LABORATORY GROWN DIAMOND**
Shape and Cutting Style **CUT CORNERED RECTANGULAR
MODIFIED BRILLIANT**
Measurements **8.45 X 6.04 X 4.39 MM**

GRADING RESULTS

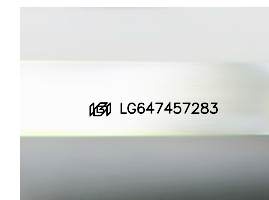
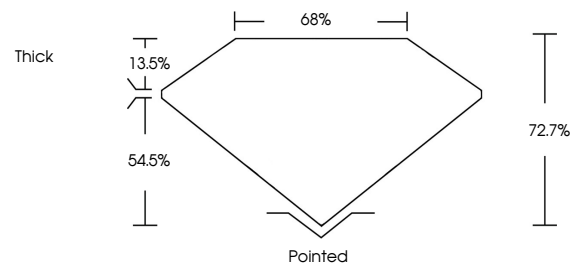
Carat Weight **2.00 CARATS**
Color Grade **FANCY YELLOW**
Clarity Grade **VS 2**

ADDITIONAL GRADING INFORMATION

Polish **EXCELLENT**
Symmetry **EXCELLENT**
Fluorescence **SLIGHT**
Inscription(s) **IGI LG647457283**

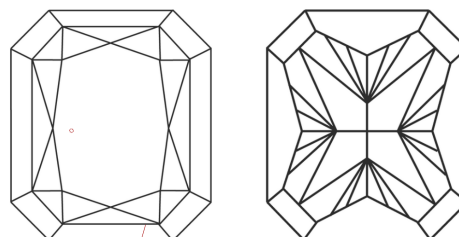
Comments: This Laboratory Grown Diamond was created by Chemical Vapor Deposition (CVD) growth process. Indications of post-growth treatment.

PROPORTIONS



Sample Image Used

CLARITY CHARACTERISTICS



KEY TO SYMBOLS

Red symbols indicate internal characteristics.
Green symbols indicate external characteristics.

COLOR

D E F G H I J Faint Very Light Light

CLARITY

IF	VS ¹⁻²	VS ¹⁻²	SI ¹⁻²	I ¹⁻³
Internally Flawless	Very Very Slightly Included	Very Slightly Included	Slightly Included	Included

