



ELECTRONIC COPY

LG647457635
Report verification at igi.org



August 12, 2024
IGI Report Number **LG647457635**
Description **LABORATORY GROWN DIAMOND**
Shape and Cutting Style **CUT CORNERED
RECTANGULAR MODIFIED
BRILLIANT**
Measurements **11.79 X 8.54 X 5.53 MM**
GRADING RESULTS
Carat Weight **4.93 CARATS**
Color Grade **F**
Clarity Grade **VVS 2**

August 12, 2024
IGI Report Number **LG647457635**
Description **LABORATORY GROWN DIAMOND**
Shape and Cutting Style **CUT CORNERED RECTANGULAR
MODIFIED BRILLIANT**
Measurements **11.79 X 8.54 X 5.53 MM**

GRADING RESULTS

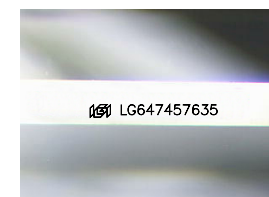
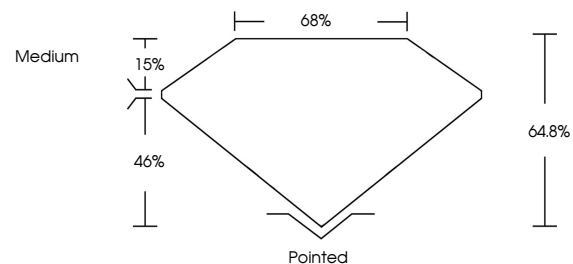
Carat Weight **4.93 CARATS**
Color Grade **F**
Clarity Grade **VVS 2**

ADDITIONAL GRADING INFORMATION

Polish **EXCELLENT**
Symmetry **EXCELLENT**
Fluorescence **NONE**
Inscription(s) **IGI LG647457635**

Comments: This Laboratory Grown Diamond was created by Chemical Vapor Deposition (CVD) growth process.
Type IIa

PROPORTIONS



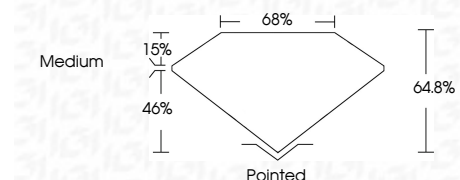
Sample Image Used

COLOR

D E F G H I J Faint Very Light Light

CLARITY

| IF | VS ¹⁻² | VS ¹⁻² | SI ¹⁻² | I ¹⁻³ |
|---------------------|-----------------------------|------------------------|-------------------|------------------|
| Internally Flawless | Very Very Slightly Included | Very Slightly Included | Slightly Included | Included |



ADDITIONAL GRADING INFORMATION

Polish **EXCELLENT**
Symmetry **EXCELLENT**
Fluorescence **NONE**
Inscription(s) **IGI LG647457635**
Comments: This Laboratory Grown Diamond was created by Chemical Vapor Deposition (CVD) growth process.
Type IIa



August 12, 2024
IGI Report No LG647457635
CUT CORNERED RECT. MODIFIED BRILLIANT
11.79 X 8.54 X 5.53 MM
4.93 CARATS
F
VVS 2
64.8%
65%
Medium
Pointed
EXCELLENT
EXCELLENT
NONE
IGI LG647457635
Comments: This Laboratory Grown Diamond was created by Chemical Vapor Deposition (CVD) growth process.
Type IIa