



ELECTRONIC COPY

LG647458631
Report verification at igi.org



October 5, 2024

IGI Report Number **LG647458631**

Description **LABORATORY GROWN DIAMOND**

Shape and Cutting Style **ROUND BRILLIANT**

Measurements **8.88 - 8.94 X 5.52 MM**

GRADING RESULTS

Carat Weight **2.71 CARATS**

Color Grade **E**

Clarity Grade **VS 1**

Cut Grade **IDEAL**

October 5, 2024

IGI Report Number **LG647458631**

Description **LABORATORY GROWN DIAMOND**

Shape and Cutting Style **ROUND BRILLIANT**

Measurements **8.88 - 8.94 X 5.52 MM**

GRADING RESULTS

Carat Weight **2.71 CARATS**

Color Grade **E**

Clarity Grade **VS 1**

Cut Grade **IDEAL**

ADDITIONAL GRADING INFORMATION

Polish **EXCELLENT**

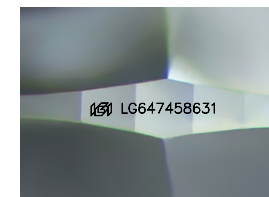
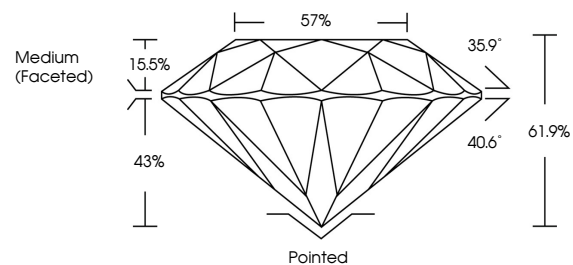
Symmetry **EXCELLENT**

Fluorescence **NONE**

Inscription(s) **IGI LG647458631**

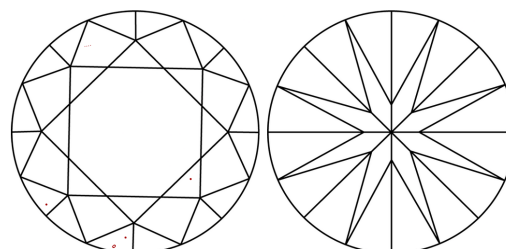
Comments: This Laboratory Grown Diamond was created by Chemical Vapor Deposition (CVD) growth process.
Type IIa

PROPORTIONS



Sample Image Used

CLARITY CHARACTERISTICS



KEY TO SYMBOLS

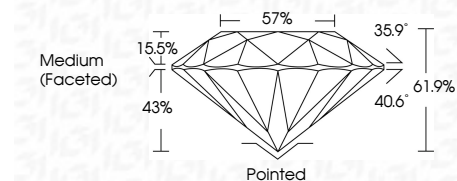
Red symbols indicate internal characteristics.
Green symbols indicate external characteristics.

COLOR

D E F G H I J Faint Very Light Light

CLARITY

IF	VS ¹⁻²	VS ¹⁻²	SI ¹⁻²	I ¹⁻³
Internally Flawless	Very Very Slightly Included	Very Slightly Included	Slightly Included	Included



ADDITIONAL GRADING INFORMATION

Polish **EXCELLENT**

Symmetry **EXCELLENT**

Fluorescence **NONE**

Inscription(s) **IGI LG647458631**

Comments: This Laboratory Grown Diamond was created by Chemical Vapor Deposition (CVD) growth process.
Type IIa



IGI



October 5, 2024
IGI Report No LG647458631
ROUND BRILLIANT

8.88 - 8.94 X 5.52 MM

Carat Weight **2.71 CARATS**

Color Grade **E**

Clarity Grade **VS 1**

Cut Grade **IDEAL**

Depth **61.9%**

Table **57%**

Girdle **Medium (Faceted)**

Culet **Pointed**

Polish **EXCELLENT**

Symmetry **EXCELLENT**

Fluorescence **NONE**

Inscription(s) **IGI LG647458631**

Comments: This Laboratory Grown Diamond was created by Chemical Vapor Deposition (CVD) growth process.
Type IIa