



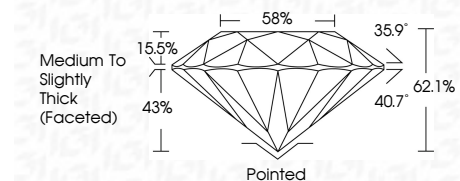
ELECTRONIC COPY

LG647470088 Report verification at igi.org



August 13, 2024 IGI Report Number LG647470088 Description LABORATORY GROWN DIAMOND Shape and Cutting Style ROUND BRILLIANT Measurements 7.36 - 7.37 X 4.58 MM

GRADING RESULTS Carat Weight 1.55 CARAT Color Grade G Clarity Grade VS 2 Cut Grade IDEAL



ADDITIONAL GRADING INFORMATION Polish EXCELLENT Symmetry EXCELLENT Fluorescence NONE Inscription(s) LG647470088 Comments: This Laboratory Grown Diamond was created by Chemical Vapor Deposition (CVD) growth process. Type IIa



August 13, 2024 IGI Report No LG647470088 ROUND BRILLIANT 7.36 - 7.37 X 4.58 MM 1.55 CARAT G VS 2 IDEAL 62.1% 58% Medium To Slightly Thick (Faceted) Pointed EXCELLENT EXCELLENT NONE NONE LG647470088

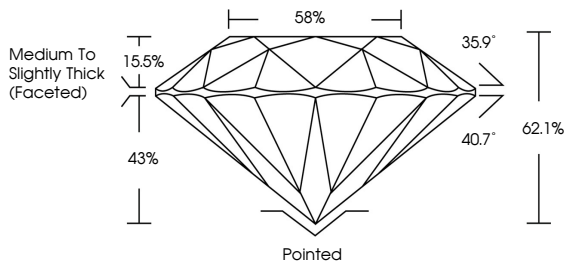
August 13, 2024 IGI Report Number LG647470088 Description LABORATORY GROWN DIAMOND Shape and Cutting Style ROUND BRILLIANT Measurements 7.36 - 7.37 X 4.58 MM

GRADING RESULTS Carat Weight 1.55 CARAT Color Grade G Clarity Grade VS 2 Cut Grade IDEAL

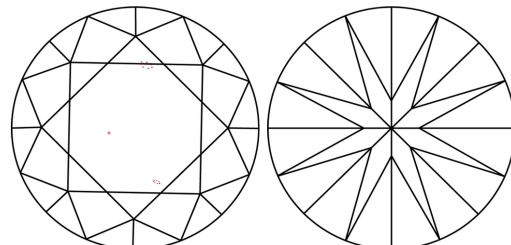
ADDITIONAL GRADING INFORMATION Polish EXCELLENT Symmetry EXCELLENT Fluorescence NONE Inscription(s) LG647470088

Comments: This Laboratory Grown Diamond was created by Chemical Vapor Deposition (CVD) growth process. Type IIa

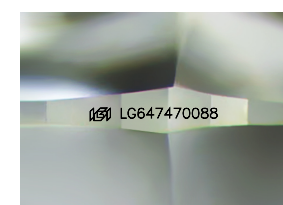
PROPORTIONS



CLARITY CHARACTERISTICS



KEY TO SYMBOLS Red symbols indicate internal characteristics. Green symbols indicate external characteristics.



Sample Image Used

COLOR D E F G H I J Faint Very Light Light

CLARITY IF WVS 1-2 VS 1-2 SI 1-2 I 1-3 Internally Flawless Very Very Slightly Included Very Slightly Included Slightly Included Included

