



ELECTRONIC COPY

LG64747271
Report verification at igi.org



August 13, 2024

IGI Report Number **LG64747271**

Description **LABORATORY GROWN DIAMOND**

Shape and Cutting Style **ROUND BRILLIANT**

Measurements **8.72 - 8.78 X 5.40 MM**

GRADING RESULTS

Carat Weight **2.56 CARATS**

Color Grade **G**

Clarity Grade **VVS 2**

Cut Grade **EXCELLENT**

August 13, 2024
IGI Report Number **LG64747271**
Description **LABORATORY GROWN DIAMOND**
Shape and Cutting Style **ROUND BRILLIANT**
Measurements **8.72 - 8.78 X 5.40 MM**

GRADING RESULTS

Carat Weight **2.56 CARATS**

Color Grade **G**

Clarity Grade **VVS 2**

Cut Grade **EXCELLENT**

ADDITIONAL GRADING INFORMATION

Polish **EXCELLENT**

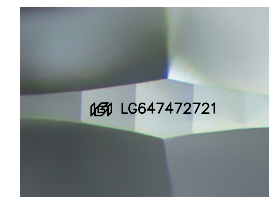
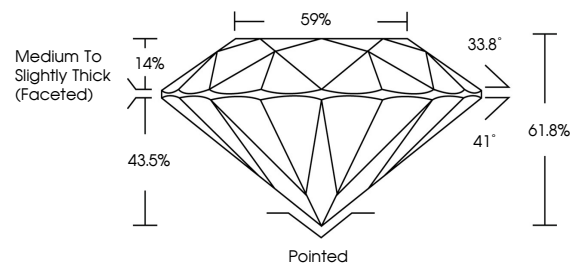
Symmetry **EXCELLENT**

Fluorescence **NONE**

Inscription(s) **IGI LG64747271**

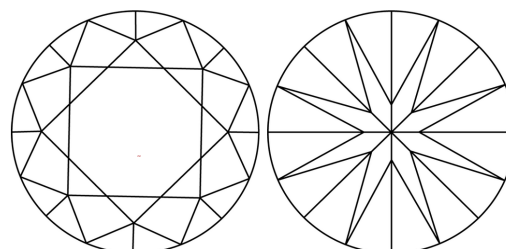
Comments: This Laboratory Grown Diamond was created by Chemical Vapor Deposition (CVD) growth process.
Type IIa

PROPORTIONS



Sample Image Used

CLARITY CHARACTERISTICS



KEY TO SYMBOLS

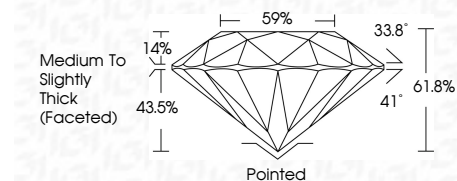
Red symbols indicate internal characteristics.
Green symbols indicate external characteristics.

COLOR

D E F G H I J Faint Very Light Light

CLARITY

IF	VS ¹⁻²	VS ¹⁻²	SI ¹⁻²	I ¹⁻³
Internally Flawless	Very Very Slightly Included	Very Slightly Included	Slightly Included	Included



ADDITIONAL GRADING INFORMATION

Polish **EXCELLENT**

Symmetry **EXCELLENT**

Fluorescence **NONE**

Inscription(s) **IGI LG64747271**

Comments: This Laboratory Grown Diamond was created by Chemical Vapor Deposition (CVD) growth process.
Type IIa



IGI



August 13, 2024
IGI Report No LG64747271
ROUND BRILLIANT
8.72 - 8.78 X 5.40 MM
Carat Weight 2.56 CARATS
Color Grade G
Clarity Grade VVS 2
Cut Grade EXCELLENT
Depth 61.8%
Table 14%
Girdle 59%
Medium To Slightly Thick (Faceted)
Culet Pointed
Polish EXCELLENT
Symmetry EXCELLENT
Fluorescence NONE
Inscriptions(s) IGI LG64747271
Comments: This Laboratory Grown Diamond was created by Chemical Vapor Deposition (CVD) growth process.
Type IIa